



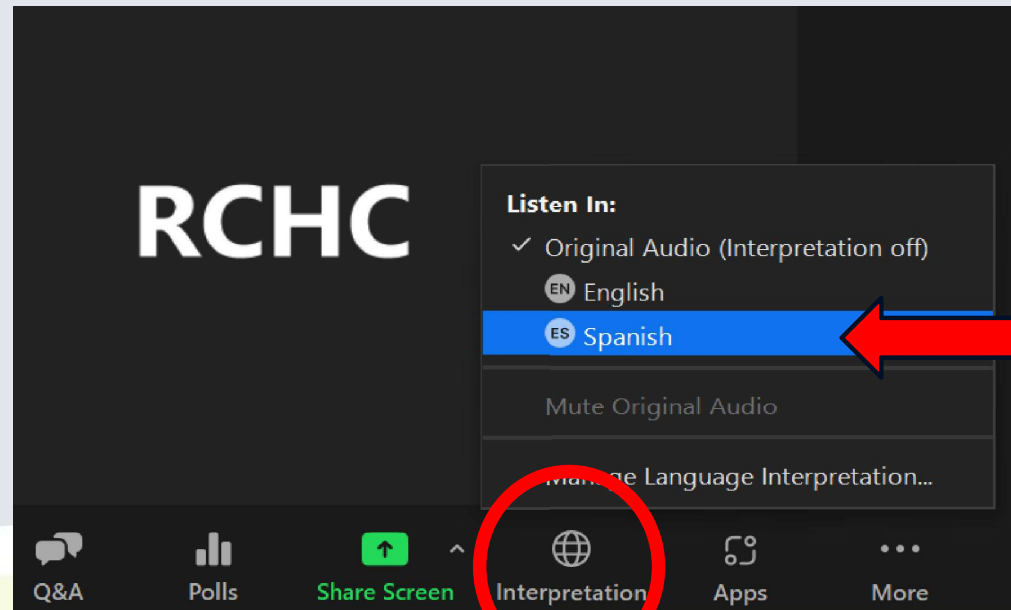
*Stronger Together: A Showcase of
Community Health Partners*

*Más Fuertes Juntos: Una exhibición de Socios
Comunitarios de Salud*

**Welcome! We will begin
momentarily.**

**¡Bienvenidos! Comenzaremos en
un momento.**

July 16, 2025



*Para audio en español, primero haga clic
en la opción de "Interpretation." Luego
hará clic en la opción de "Spanish".*



RIVERSIDE COUNTY

**HEALTH
COALITION**

Stronger Together: A Showcase of Community Health Partners

Más Fuertes Juntos: Una exhibición de Socios Comunitarios de Salud

**Welcome and
Acknowledgements!**
¡Bienvenida y Reconocimientos!

AGENDA



AGENDA

Welcoming Remarks and Introduction

Land Acknowledgement

Presentation by Family Service Association (FSA)

Kim Bustillos-Chacon, HOPE Program Manager

Presentation by Blue Zones Project- Riverside

Erin Edwards, Executive Director and Paloma Montes, Public Policy Lead

Break/Networking

Presentation by TODEC

Luz Gallegos, Executive Director

Action Group and CHIP Update

Breakout Discussion

Survey/Gift Card Activity

Health Equity Updates/Wrap-Up

HOUSEKEEPING / ASUNTOS



In-Person

- Please sign in at the greeter's table
- Restrooms located in the hallway/
Breastfeeding room available
- Staff will monitor throughout the meeting
- We have closed captioning services in English & Spanish and an ASL Interpreter.
 - Information provided as QR code below
- Slides and a recording of this event will be shared after the meeting.



English Stream Text



En persona:

- Regístrese en la mesa de bienvenida
- Baños ubicados en el pasillo/
Sala de lactancia disponible
- El personal supervisará durante toda la reunión.
- Contamos con servicios de subtítulos en inglés y español y un intérprete de ASL.
 - Información proporcionada como código QR a continuación
- Las diapositivas y una grabación de este evento se compartirán después de la reunión.

Español Stream Text



HOUSEKEEPING / ASUNTOS



Virtual:

- Please enter your name, pronouns, and affiliation in your profile name.
- Staff will monitor throughout the meeting
- All participants are muted upon entry.
- Please submit any questions through the Q&A box
- We have closed captioning services in English & Spanish and an ASL Interpreter.
 - Information provided in the chat



English Stream Text



Virtual:

- Por favor ingrese su nombre, pronombres, y afiliación en su nombre de perfil.
- El personal supervisará durante toda la reunión.
- Todos los participantes son silenciados al entrar.
- Envíe cualquier pregunta a través del cuadro de preguntas y respuestas.
- Contamos con servicios de subtítulos en inglés y español y un intérprete de ASL.
 - Información proporcionada en el chat.

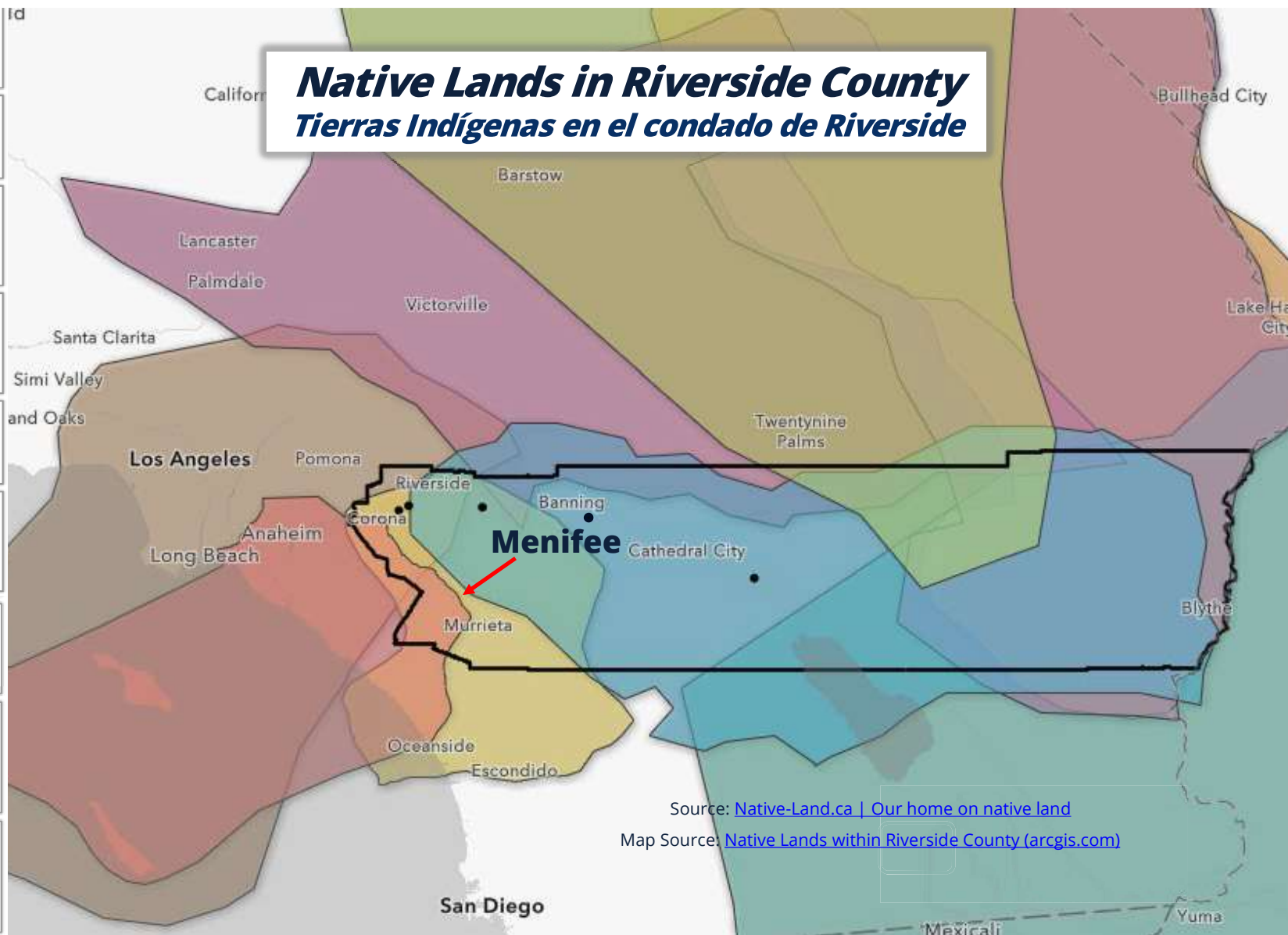
Español Stream Text



- Acjachemen (Juaneño)
- Cahuilla
- Newe (Western Shoshone)
- Nuwuvi (Southern Paiute)
- Nūwūwū (Chemehuevi)
- Payómkawichum (Luiseño)
- Tongva (Gabrielino)
- Xawill kw̓ichawaay (Cocopah)
- Yuhaviatam/Maarenga'y am (Serrano)

Native Lands in Riverside County

Tierras Indígenas en el condado de Riverside



Source: Native-Land.ca | [Our home on native land](https://Native-Land.ca/our-home-on-native-land)

Map Source: [Native Lands within Riverside County \(arcgis.com\)](https://arcgis.com)

Land Acknowledgment

The Riverside University Health System – Public Health, Health Equity program acknowledges the traditional, ancestral, and contemporary homelands of the Indigenous Peoples of Riverside County whose land we occupy. The Iviatem (Cahuilla), Payómkawichum (Luiseño), Maara'yam (Serrano), Nuwuvi (Chemehuevi), and Tongva (Gabrieleño) peoples have been the caretakers of this land, water, and air since time immemorial.

Indigenous Peoples have been forcefully displaced or relocated and colonization is ongoing with their lands still occupied due to the dishonest illusion of promised treaties. The Health Equity program commits to practicing cultural humility and reciprocity, respecting, and supporting the tribal sovereignty, culture, and beliefs of Indigenous Peoples of Riverside County and beyond.

We hope to build an honest, ongoing relationship with Indigenous Peoples in Riverside County as we learn from their vast experiences. We recognize that there have been past injustices and aim to move toward reconciliation with good intentions and respect. We challenge you to join us in this work. If you are unaware of whose land you are currently occupying, we encourage you to learn about the Indigenous Peoples in your area, their history and ongoing resilience.



Mission:
*to **Promote, Improve, and Sustain***
social and physical environments for health and wellness in Riverside County!

¡Una coalición hecha para
Promover, Mejorar y Mantener
entornos sociales y físicos para la salud y el bienestar en el condado de Riverside!

Why are we here?

¿Por qué estamos aquí?



- Expansion of partnerships
 - Shared resources
 - Highlighting innovative practices
 - Community empowerment
-
- Expansión de asociaciones
 - Recursos compartidos
 - Destacando prácticas innovadoras
 - Empoderamiento de la comunidad

RCHC Website: Community Resources and Events



The graphic features a tablet displaying the Riverside University Health System website. The website header includes the logo, navigation links (RUHS, NEWS, LOCATIONS, APPOINTMENTS, RESOURCES, SERVICES, CAREERS), and a search bar. The main content area is titled "Our Mission • Nuestra Misión" and describes the coalition's goals. To the right of the tablet, there is a logo for the Riverside County Health Coalition, which includes icons of people, a bar chart, and a balance scale. Below the tablet, there is a large orange speech bubble containing a QR code and text encouraging users to check out the website for resources and events. To the right of the QR code, there is a teal speech bubble with text encouraging users to click or scan the QR code. At the bottom, there is a dark blue banner with contact information.

RIVERSIDE COUNTY HEALTH COALITION

Connect with us!

Check out the website for resources and events in the community!

**Updated monthly*

Click or Scan the QR Code to check it out!

If you have any questions, email us at RivCoHealthEquity@RUHealth.org

"Who's in the Room? Let's Find Out!"

"¿Quién está aquí? ¡Averigüémoslo!"

What sector does your organization represent?

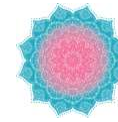
¿Qué sector representa su organización?

- Community Members/ Students
- Community-Based Organizations / Faith-Based Organizations
- Education / Academia
- Government
- Healthcare / Public Health
- Housing/ Planning
- Law Enforcement / First Responder
- Native / Tribal Community
- Social Services / Mental Health
- Other
- *Miembros de la comunidad/Estudiantes*
- *Organizaciones basadas en la comunidad / Organizaciones basadas en la fe*
- *Educación / Academia*
- *Gobierno*
- *Cuidado de Salud / Salud Pública*
- *Vivienda/ Planificación*
- *Aplicación de la ley/ Primeros Auxilios*
- *Comunidad Nativa / Tribal*
- *Servicios Sociales / Salud Mental*
- *Otro*

Representation Matters!

¡La representación importa!





Transgender Health
and Wellness Center



30 YEARS
OF BUILDING
FOR GOOD



WORLD BE WELL, INC.



Family Service Association

PRESENTACIÓN



Kim Bustillos-Chacon (she/her)
HOPE Program Manager
Family Service Association (FSA)



Family Service Association

*"Family Strength
is Community Strength"*



Mission and Vision:

Mission: We address poverty, hunger, and health, from infancy to older adults, in families and underserved communities.

Vision: We envision a day when Inland Empire communities have strong families without poverty, hunger, or health disparities.

Family Service Association

Child Development Centers

Community Centers & Senior Services

Family and Mental Health

Child Development Centers

- Accredited by the National Association for the Education of Young Children (NAEYC)
- Offers a safe, stimulating, and educational environment for infants to transitional kindergarten aged children.
- 10 locations throughout Riverside County
- Offer low to no cost childcare for families who qualify
- Contact (951)779-9623, www.fsaca.org/child-development

Community Centers & Senior Services

- Assists seniors and loved ones in helping maintain their independence.
- Offer congregate or "Group Meals" served at 26 Community/Senior Centers.
- "More Than A Meal" program delivers meals to home-bound seniors throughout the region
- Contact (951) 342-3057, www.fsaca.org/senior-services.

Family & Mental Health

Differential Response

- DPSS Referral
- 12 parenting classes teaching parenting skill using the Nurturing Parenting Program Curriculum

CalWorks Home Visiting Program

- CalWorks recipient
- Parents as Teachers
- Parenting tips, child development info, and fun learning activities.

Child Abuse Treatment

- Individual child therapy sessions
- Witnessed or experienced abuse
- Contact (951) 369-8036

Healing. Outreach. Prevention. Education.



- Community outreach
- Free Mandated Reporter Training
- Educational workshops
- Monthly regional collaborative meetings
- Contact (951) 686-3750, www.hopecollaborative.org



Thank you!



Fsaca.org



hopecollaborative.org

Q & A

PREGUNTAS Y RESPUESTAS

The Blue Zones Project

Riverside Story

PRESENTACIÓN



Erin Edwards *(she/her)*
Executive Director
Blue Zones Riverside



Paloma Montes *(she/her)*
Public Policy Lead
Blue Zones Riverside



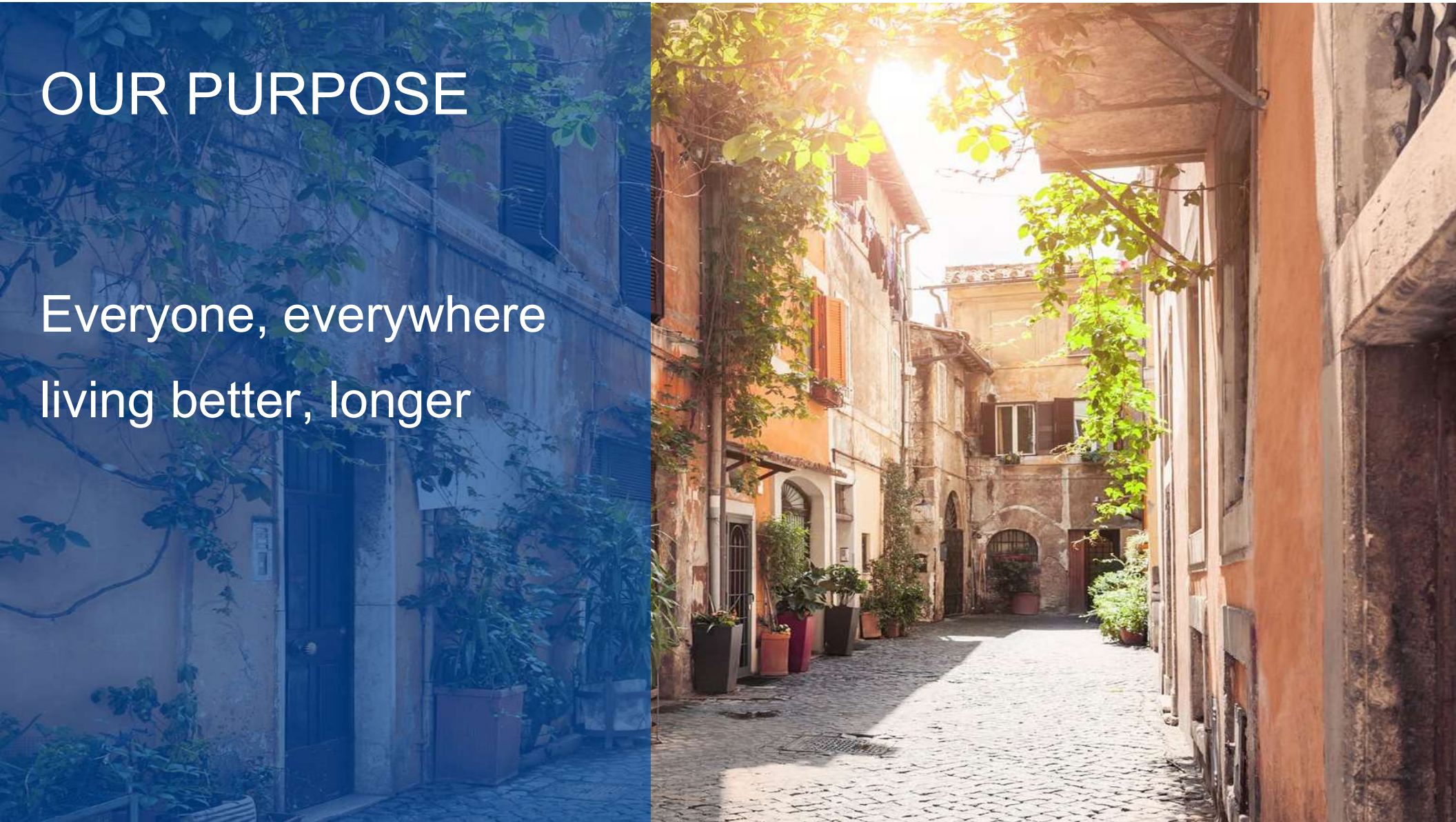
BLUE ZONES[®]

live better, longer[™]



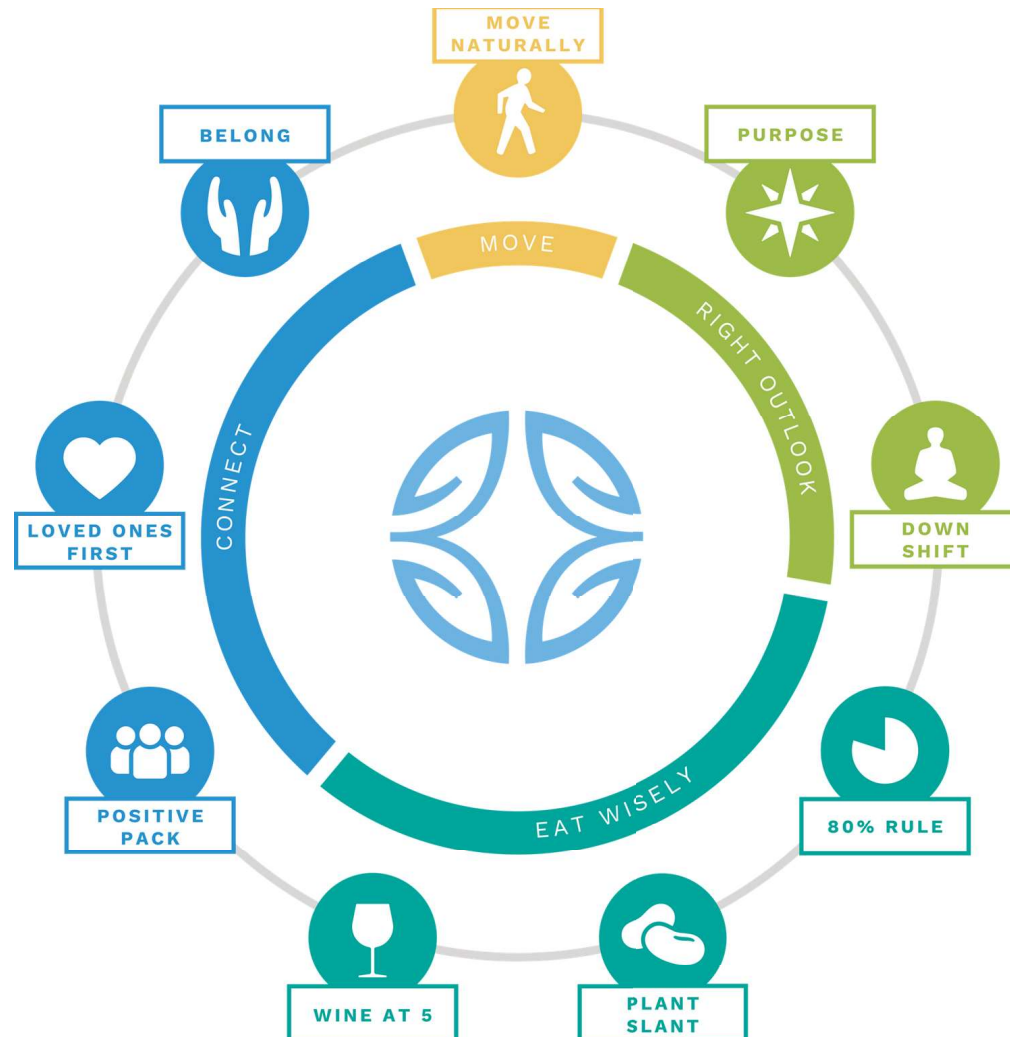
OUR PURPOSE

Everyone, everywhere
living better, longer



Our Origin Story





The Blue Zones American Story





Albert Lea, Minnesota

Beach Cities, California



Fort Worth, Texas

NCH Healthcare System



The Blue Zones Project Riverside Story



Public-Private Partnership



Blue Zones Project Riverside Team



Impacting people



Impacting places



Impacting policy







Places





Policy



Our Strategy







RIVERSIDE
BLUEPRINT
May 2025



Scan to read our Blueprint!

Measuring Success With The Well-Being Index



CAREER



SOCIAL



FINANCIAL



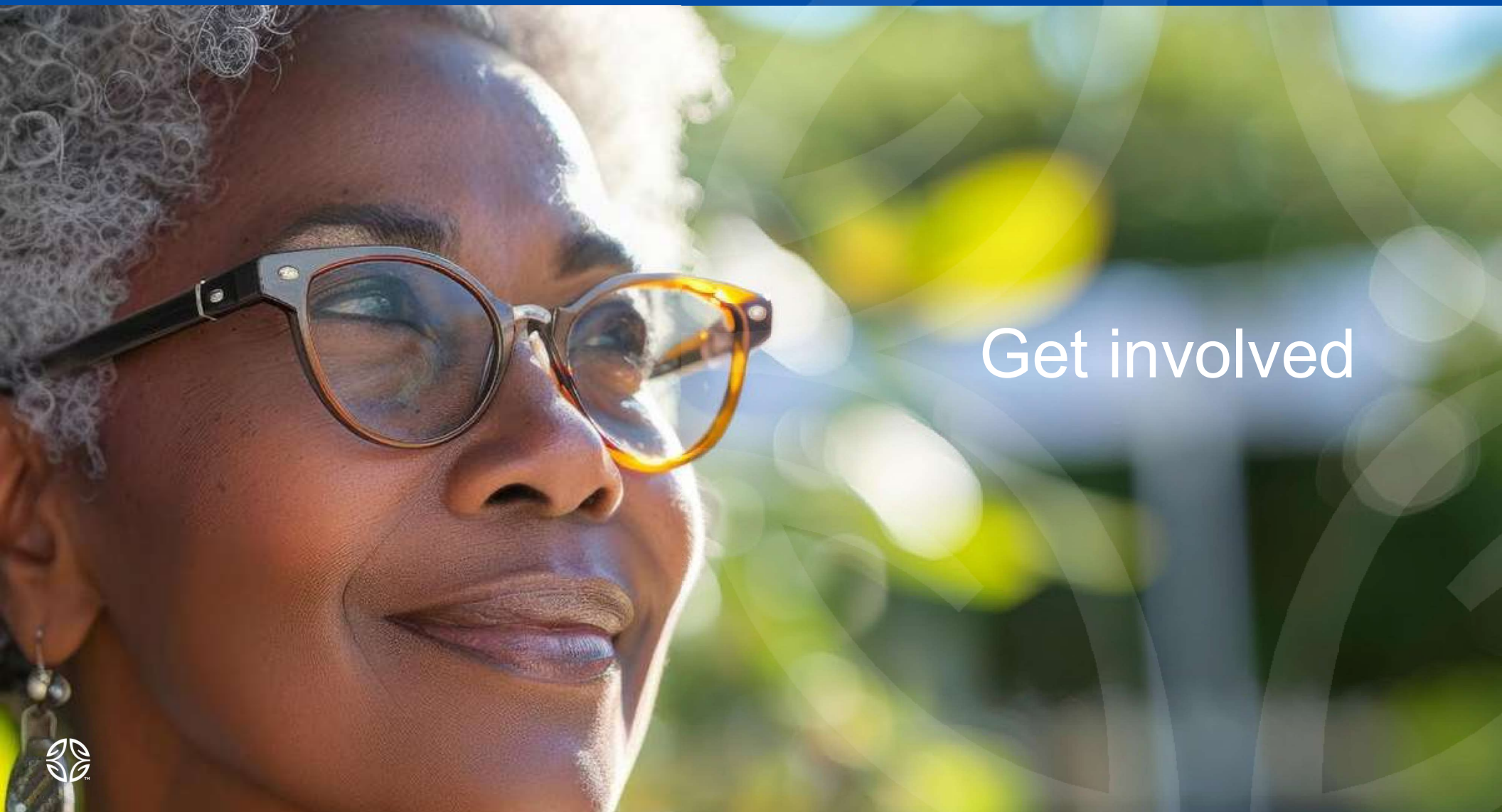
COMMUNITY



PHYSICAL







Get involved





Check out our newsletter



Sign up to volunteer

Any other question? Reach out to
Paloma at Paloma@BlueZones.com



BLUE ZONES[®]

live better, longer[™]

ErinEdwards@bluezones.com
815-793-4957

Q & A

PREGUNTAS Y RESPUESTAS

Break/Networking

Receso

TODEC Legal Center

PRESENTACIÓN



Luz Gallegos (she/her)
Executive Director
TODEC Legal Center
www.TODEC.org

Q & A

PREGUNTAS Y RESPUESTAS

Action Group & CHIP Update Meeting

Receso



Community Health Improvement Plan (CHIP)

Presenter: Marina Carbajal

Purpose of CHA/CHIP

Community Health Assessment (CHA)

- Analysis of **health data, trends, and community input.**



Community Health Improvement Plan (CHIP)

- Outlines strategic goals, measurable objectives and actionable strategies.
- Fosters **collaboration**, aligns **resources**, and integrates policies to **address disparities** and promote equitable **health improvements.**



Why the CHIP Matters?

- The CHIP represents the community's shared vision for better health and well-being.
- Aligns efforts across sectors: healthcare, public health, education, housing, transportation, and more.
- Promotes equity, collaboration, and accountability.
- Opportunity for real, measurable impact on systemic challenges.



County Perception of Health: Most Important Health Problems



Note: Issues with less than 10% of responses include other (8.4%), suicide (7.3%), disabilities (6.3%), poor dental health (4.4%), stroke (4.1%), asthma (3.7%), respiratory disease (3.2%), teen pregnancy (3.1%), sexually transmitted diseases (2.8%) and infant mortality (0.8%).

Timeline in RCHC Priority Areas and CHIP

Community Engagement for Action

RCHC hosted a facilitated discussion on the top priority areas facing Riverside County.

Jan. 2024

Harmony in Health

RCHC members broke out into groups based on two priority areas: Mental Health/Behavioral Health and Housing.

July 2024

Bridging the Gap

RCHC introduced the action group co-leads and the new action group: Access to Care and Resources!

Oct. 2024

Drafting the CHIP

Currently, the CHIP draft is being written and will be submitted to PHAB for accreditation.

Dec - Feb 2025

April 2024

Continuing the Steps Towards Action

RCHC members continued the discussion on the top priority areas.

Sep. 2024

First Action Group Meetings

The Mental Health/ Behavioral Health and Housing action groups held their first meetings!

Oct - Nov 2024

CHIP Kickoff Meetings

All three action groups met together to work on their objectives and activities.

CHIP Priority Areas

Mental and Behavioral Health:



- **Objective 1: Increase outreach for mental health support by 15%.**
 - *Activity 1: By 2029, provide culturally competent mental health training for mental health staff.*
 - *Activity 2: By 2029, boost collaborative outreach between partners.*
- **Objective 2: Improve language accessibility and increase resource access for disenfranchised community members by 10%.**
 - *Activity 1: By 2027, conduct outreach to community partners specializing in ADA needs to fortify partnerships.*
 - *Activity 2: By 2029, disseminate resource tools to partners who do not currently have ADA resources.*

Housing



- **Objective 1: Increase access to affordable housing units across Riverside County by 5%.**
 - *Activity 1: By 2027, establish connections with the Riverside County Housing and Workforce Solutions Department or similar agencies.*
 - *Activity 2: By 2029, further implement any related agency strategic action plans that deal with enhancing access to affordable housing including smoke-free multi-unit housing and climate-resilient design.*

CHIP Priority Areas

Housing (cont.)



- **Objective 2: Increase access to shelter beds and transitional housing units across Riverside County by 5%**
 - *Activity 1: By 2028, participate in advocacy groups such as the National Alliance to End Homelessness and Bring California Home.*
 - *Activity 2: By 2029, help influence policy measures associated with increasing access to transitional housing and shelter beds and potentially integrate healthcare, mental health, or other services.*

Access to care



- **Objective 1: Increase clients' access and understanding of resource navigation, support/advocacy, and health education by 10%.**
 - *Activity 1: By 2027, utilize CHWs to ensure underserved community needs are more effectively addressed and equitable across various demographics.*
- **Objective 2: Increase awareness of Riverside County services by growing social media platforms followers by 15%.**
 - *Activity 1: By 2027, create educational campaigns to inform community of available resources.*
 - *Activity 2: By 2027, host at least two partnered events such as a community fair that highlights available resources.*

The Value of Action Group Participation

- **Collaboration:** Work alongside like-minded organizations to co-design solutions.
- **Amplify Impact:** Align your work with a county-wide strategy and access shared resources.
- **Influence:** Help shape policies, programs, and investments that affect our residents.
- **Visibility:** Show your organization's commitment to health equity and community leadership.



From Plan to Action – How We're Moving Forward, *Today*



What can YOU do?

- We need your expertise
- We need your collaboration
- We need your advocacy

Thank you!

For any Questions & Comments:

Riverside County, Health Equity Program

RUHS – Public Health, Epidemiology & Program Evaluation

RivCoHealthEquity@ruhealth.org

Marina Carbajal

Program Coordinator II/Accreditation Coordinator

Ma.Carbajal@ruhealth.org

**Together, building a healthier, more equitable, and just
Riverside County communities.**

CHIP Action Group Breakout Session

In-Person & Virtual

Purpose of Breakout Sessions:

To reconnect and relaunch CHIP action groups by surfacing community input on engagement, objectives, cadence, and inspiration from speakers. Attendees will self-select into one of three action group:

Breakout Groups:

- Mental / Behavioral Health
- Housing
- Access to Equitable and Just Care and Resources

Discussion Questions:

1. What motivated you to join this breakout group today, and what would make it meaningful for you to continue participating or create barriers for participating?
2. Thinking about our CHIP objectives, what are some goals we can achieve in the priority area over the next year?
3. What did you learn from today's speakers that could inspire or inform the work of this action group?
4. How often would you prefer this group to meet — monthly, every other month, or what is your preference to staying connected?

Debrief: Breakout Session Highlights

Welcome back! Now that we've returned from our breakout sessions, we'll take a few minutes to share back as a full group.

Each group is invited to give a brief summary of their discussion. Please include:

- **Key themes or insights**
- **Shared challenges or opportunities**
- **Ideas for next steps or future collaboration**

Kindly take our survey

Por favor responda a nuestra encuesta

Your feedback will help us advance health equity in
Riverside County, together!

¡Sus comentarios nos ayudarán a promover la equidad en salud en el condado de
Riverside, juntos!

English & Español



The survey link is also in the chat.
El enlace de la encuesta también está en el chat.

CHIP In & Commit: Advancing Community Health Priorities

Email us at RivCoHealthEquity@ruhealth.org, Subject line: "July RCHC Meeting – CHIP In & Commit Activity" with:



- ❖ **CHIP In!** After participating in the breakout sessions, what is one specific contribution (skill, resource, idea, or connection) you or your organization can offer to support one of the CHIP priority areas (Mental/Behavioral Health, Housing, or Access to Care)?
- ❖ **Commit!** What is one small action you will take within the next 30 days to help advance this CHIP priority in your community?

The first 6 people (virtual or in-person) will win a \$25 gift card!

**Disclaimer: County employees and interns are not eligible to receive monetary incentives.*

GIFT CARD ACTIVITY WINNERS!

GANADORES DE LA ACTIVIDAD DE TARJETAS DE REGALO

Updates

ACTUALIZACIONES

RivCoHealthEquity@ruhealth.org



il



t!





@EquityInRivco



Links in Chat
Enlaces en el Chat



[https://www.ruhealth.org/
health-equity-program](https://www.ruhealth.org/health-equity-program)



rivcohealthequity@ruhealth.org



[@equityinrivco](#) | EquiTEA Podcast

RCHC Website: Community Resources and Events



RIVERSIDE COUNTY HEALTH COALITION

Connect with us!

Check out the website for resources and events in the community!

**Updated monthly*



Click or Scan the QR Code to check it out!

If you have any questions, email us at RivCoHealthEquity@RUHealth.org

Share Your Thoughts

Comparta sus Ideas

Kindly take our survey. Your feedback will help us advance health equity in Riverside County, together!

Por favor responda a nuestra encuesta ¡Sus comentarios nos ayudarán a promover la equidad en salud en el condado de Riverside, juntos!

English & Español



The survey link is also in the chat.
El enlace de la encuesta también está en el chat.



RIVERSIDE COUNTY
**HEALTH
COALITION**

Please pass this
invitation along to
your partner
networks as we
welcome their
participation!

Community
resources and
events shared by the
coalition can be
found on our
RCHC Website

2025 General Membership Meeting Schedule:

TIME:
10 a.m. - 12 p.m.

LOCATION: Hybrid
In Person or Online

REGISTRATION INFORMATION

Wednesday, January 22, 2025

Wednesday, April 16, 2025

Wednesday, July 16, 2025

Wednesday, October 15, 2025

The Riverside County Health Coalition Mission

The Riverside County Health Coalition is a public and private partnership whose mission is to promote, improve, and sustain social and physical environments for health and wellness through policy development and advocacy, environmental change, and community empowerment in Riverside County.

To fulfill its mission, the Riverside County Health Coalition meets quarterly every year to provide an excellent forum to share knowledge and experience; collaborate and network with other agency partners, schools, and organizations. The coalition aims to gather, support, and mobilize partners from multiple domains; provide leadership and vision; and coordinate county-wide efforts in the promotion of healthier living throughout our County.

@equityinrivco
FOLLOW US ON SOCIALS



Questions?

Email the Health Equity Team

✉ RivCoHealthEquity@ruhealth.org



RIVERSIDE COUNTY
**HEALTH
COALITION**

¡Por favor, pase
esta invitación a
sus redes de
socios para
invitarlos a
participar!

Recursos y
eventos comunitarios
compartidos por la
coalición:
RCHC Website

Calendario de juntas de membresía general del 2025:

HORARIO:
10 a.m. - 12 p.m.

UBICACIÓN: híbridas
En persona o en línea

INFORMACIÓN DE REGISTRO

Miércoles, 22 de enero, 2025

Miércoles, 16 de abril, 2025

Miércoles, 16 de julio, 2025

Miércoles, 15 de octubre, 2025

La misión de la Coalición de Salud del Condado de Riverside

La Coalición de Salud del Condado de Riverside es una asociación pública y privada cuya misión es promover, mejorar y mantener entornos sociales y físicos para la salud y el bienestar a través del desarrollo y la defensa de políticas, el cambio ambiental y el empoderamiento de la comunidad en el Condado de Riverside.

Para cumplir con su misión, la Coalición de Salud del Condado de Riverside se reúne trimestralmente cada año para proporcionar un excelente foro para compartir conocimientos y experiencias; colaborar y establecer contactos con otros socios de agencias, escuelas y organizaciones. La coalición tiene como objetivo reunir, apoyar y movilizar socios de múltiples dominios; proporcionar liderazgo y visión; y coordinar los esfuerzos de todo el condado en la promoción de una vida más saludable en todo nuestro Condado.

@equityinrivco
SÍGUENOS EN LAS REDES SOCIALES



¿Preguntas?

Envíe un correo electrónico al
Equipo de Equidad en Salud

✉ RivCoHealthEquity@ruhealth.org



Riverside County, Health Equity Program

RUHS – Public Health, Epidemiology & Program Evaluation

**Programa de Equidad en Salud
Epidemiología y Evaluación de Programas**

RivCoHealthEquity@ruhealth.org



Next meeting:

Wednesday, October 15th, 2025

The meeting will take place virtually and in person.

Próxima reunión:

miércoles, 15 de octubre de 2025

La reunión se llevará a cabo de manera virtual y presencial.