

Riverside County Health Coalition

January 19, 2022

We will begin momentarily. Your audio is temporarily muted.

If you are not using your computer audio, make sure your audio/phone is linked to your participant ID.

TECH HOUSEKEEPING

All participants have been muted

Submit any questions through the chat box-- staff will monitor throughout the meeting

AGENDA

- **Introduction**
- **Guest speakers**
 - *Vonya Quarles & Toya Vick*– Starting Over, Inc.
 - Marcus Dillard – Riverside County Housing & Workforce Solutions
 - Marcus Cannon- RUHS, Behavioral Health
- **Partner Updates**
- **Closeout**

INTRODUCTORY POLL

Who is here?

alzheimer's  association®

Anthem 

Aurrera
HealthGroup 

 **BORREGO** HEALTH

 **CBU**

 American
Cancer
Society®

 **cn** CORONA-NORCO
UNIFIED SCHOOL DISTRICT

 **aquamotion**
ABILITY FOUNDATION

 CITY OF
Hemet

 American
Heart
Association®

 DAIRY COUNCIL
of CALIFORNIA®
Healthy Eating Made Easier®

 **BLINDNESS SUPPORT
SERVICES INC.**
THE ROAD TO INDEPENDENCE

 **DESERT SANDS**
UNIFIED SCHOOL DISTRICT

 **FIRST 5**
RIVERSIDE
Riverside County Children & Families Commission

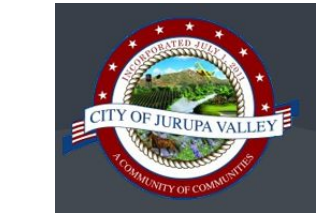
 **HEALTHY HERITAGE
MOVEMENT**

 **IEHP**
A Health Plan
Inland Empire Health Plan

 **COMMUNITY
HEALTH
SYSTEMS, INC.**

 CALIFORNIA STATE UNIVERSITY
FULLERTON

 **Desert AIDS Project**



 **DESERT HEALTHCARE**
DISTRICT & FOUNDATION



 health inside. Welcome in.
truecare™



30 YEARS
OF BUILDING
FOR GOOD



WORLD BE WELL, INC.

Why are we here?



RIVERSIDE
COUNTYHEALTH
COALITION

- Expand partnerships
- Share resources
- Highlight innovative practices
- Community empowerment



Vonya Quarles, Co-Founder & Executive Director

Toya Vick, Housing Associate and Participatory Defense Facilitator

Know Housing, Know Health

HOUSING
IS A
RIGHT

HOUSING
is a
HUMAN RIGHT

Housing
4
ALL of
us

EQUAL
HOUSING
OPPORTUNITY
4 ALL

KEEP FAMILIES
TOGETHER



Starting Over, Inc.
Transitional Housing, Reentry Services,
Advocacy and Civic Engagement

Starting Over

- Starting Over, Inc. was founded in 2009
- Direct service provider
- Offering transitional and sober housing to unsheltered people



housing and services to ov



Starting Over, Inc.
Transitional Housing, Reentry Services,
Advocacy and Civic Engagement

The same issues began to

resurface....

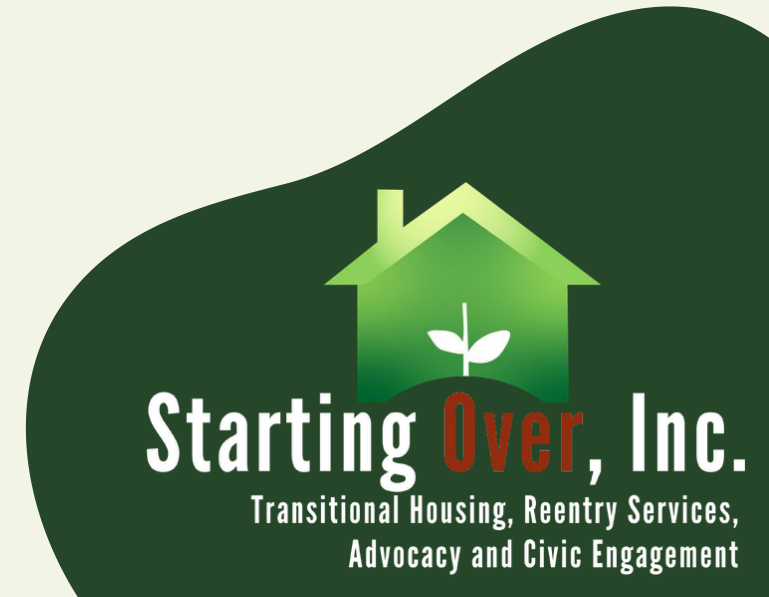
Most of our clients had criminal conviction histories.

Restrictive policies pose insurmountable barriers to independent living and the ability to thrive - the goal for each of our clients.

Our clients need support

- with: employment
- family reunification
- substance use disorders

Safe, secure housing is the best way to



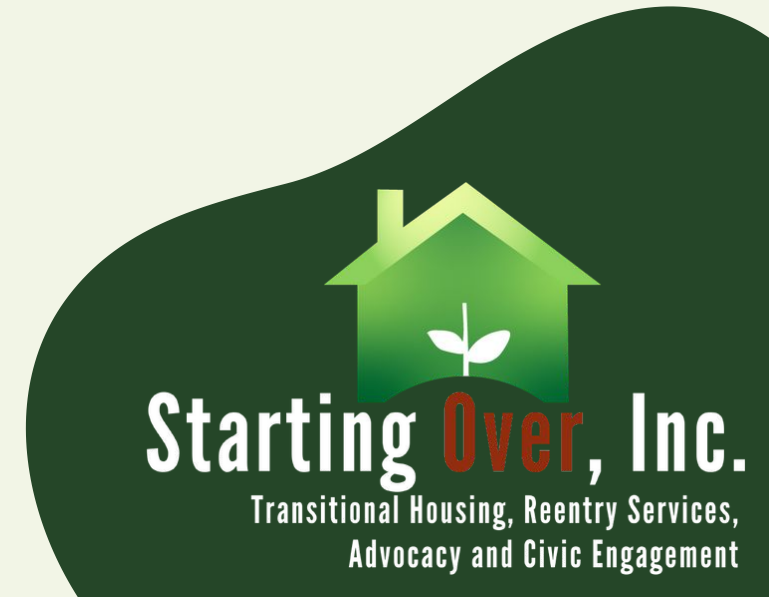
Remodeling Our Work

In 2011, we were introduced to the program model.



This model blends direct services with civic engagement and public policy work. This strength-based model uplifts and co-powers program participants through leadership development and community advocacy

Starting Over, Inc. now addresses both the direct and indirect effects of destructive policies and helps clients find the root cause of their difficult situations.



VIDEO

<https://vimeo.com/328684375>

Segregation by Design



Some Programs and Projects

- Participatory Defense - weekly meetings empowering people to transform power in the court system
- Path to Staffing, Employment & Entrepreneur Development (Path 2 SEED) and Prison to Employment (P2E)
- Case Management/Peer Support
- Legal Services - free live scans and assistance with expungements for eligible community members
- Food for Life - biweekly food distribution
- Community Organizing and Civic Engagement



Transitional Housing

Starting Over, Inc. provides transitional, harm reduction, and supportive housing. People who are system impacted and all other people in need of shelter or housing are welcomed at our eight homes.

We receive referrals from probation, Riverside University Health System, our jail in-reach programs, and through word of mouth.

Starting Over, Inc.'s primary goal is to provide stable transitional housing and reentry services.

SOI accepts nearly everyone who is referred to



Starting Over, Inc.

Transitional Housing, Reentry Services,
Advocacy and Civic Engagement

Barriers to Housing

Over 14,000 policies pose collateral consequences to incarceration, re-punishing people for time already served.

Housing is the most critical barrier to successful reentry, and while housing assistance exists, policies like crime-free housing, income qualifications, and background checks mean it is out of reach for some of Riverside's most vulnerable populations.

Dominant narratives surrounding system impacted people are also major barriers to housing and reentry.



Starting Over, Inc.

Transitional Housing, Reentry Services,
Advocacy and Civic Engagement

Direct Services -

Employment

- Starting Over, Inc. was awarded a \$198,000 Prison to Employment (P2E) Grant in 2019
- 69 participants have obtained housing and been enrolled in employment support
- Resume building, employment planning, job leads and job application assistance, transportation assistance

Case management, peer support, using motivational interviewing techniques

As part of our ongoing efforts, we are increasing engagement with community partners for cross referrals and pollination.



Starting Over, Inc.

Transitional Housing, Reentry Services,
Advocacy and Civic Engagement

Prison to Employment Initiative Grant

The number of individuals eligible for support under the P2E grant exceeds 66,000.

This represents the disproportionate amount of people with criminal records in the region: the Inland Empire is home to 12.7% of all system-impacted people in California but represents only 10.6% of the state's population.

The recidivism rate in the Inland region is higher than the California average.

Because of these conditions and the increase in releases from prisons and jails due to COVID-19 health concerns and changes in laws, the need for supportive services in the region for this population



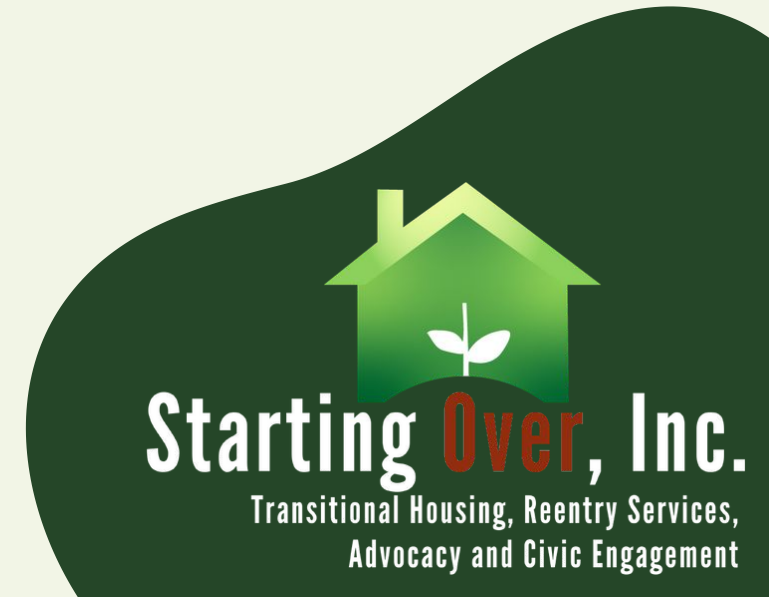
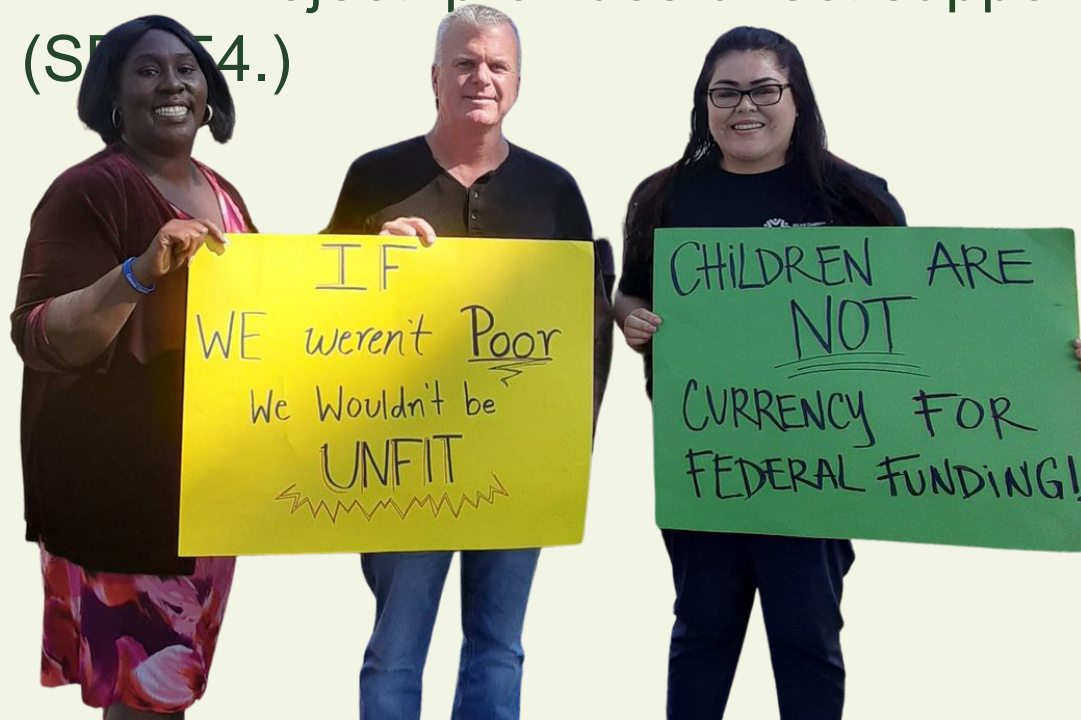
Starting Over, Inc.

Transitional Housing, Reentry Services,
Advocacy and Civic Engagement

The Family Reunification, Equity, and Empowerment

(FREE) Project

Organized by project coordinator Bobbie Butts, the FREE Project provides support for system-impacted parents and families navigating the child welfare system. Also utilizing the same hybrid model, the FREE Project provides direct support to families as well as policy work (SFA 54.)



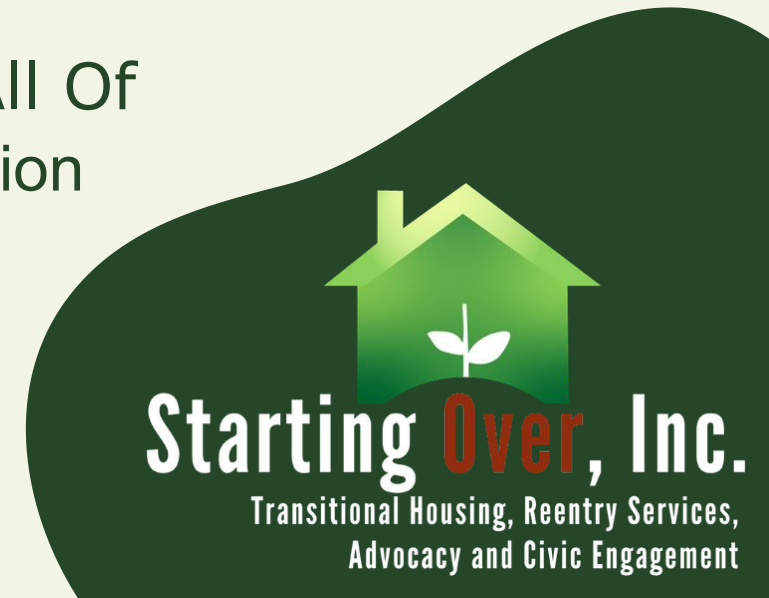
Civic Engagement and Policy Advocacy

Starting Over, Inc.'s work contains a major policy advocacy component.

Some of our housing-related policy wins include influencing Riverside County to reduce criminal history look-back periods from 7 years to 3 years in 2017 and enabling youth coming out of probation to be able to stay with their families in subsidized housing in 2019.

Starting Over, Inc. is also the fiscal sponsor of Riverside All Of Us or None, a civic engagement grassroots-led organization for the incarcerated, formerly incarcerated, and their families.

An upcoming housing policy project we hope to begin soon will be repealing crime-free housing



Data Collection

Starting Over, Inc. embarked on a data collection project at the pandemic's start. This has been a process requiring both staff and volunteer engagement and other internal retooling.

This data will be used in reports for performance-based grants.

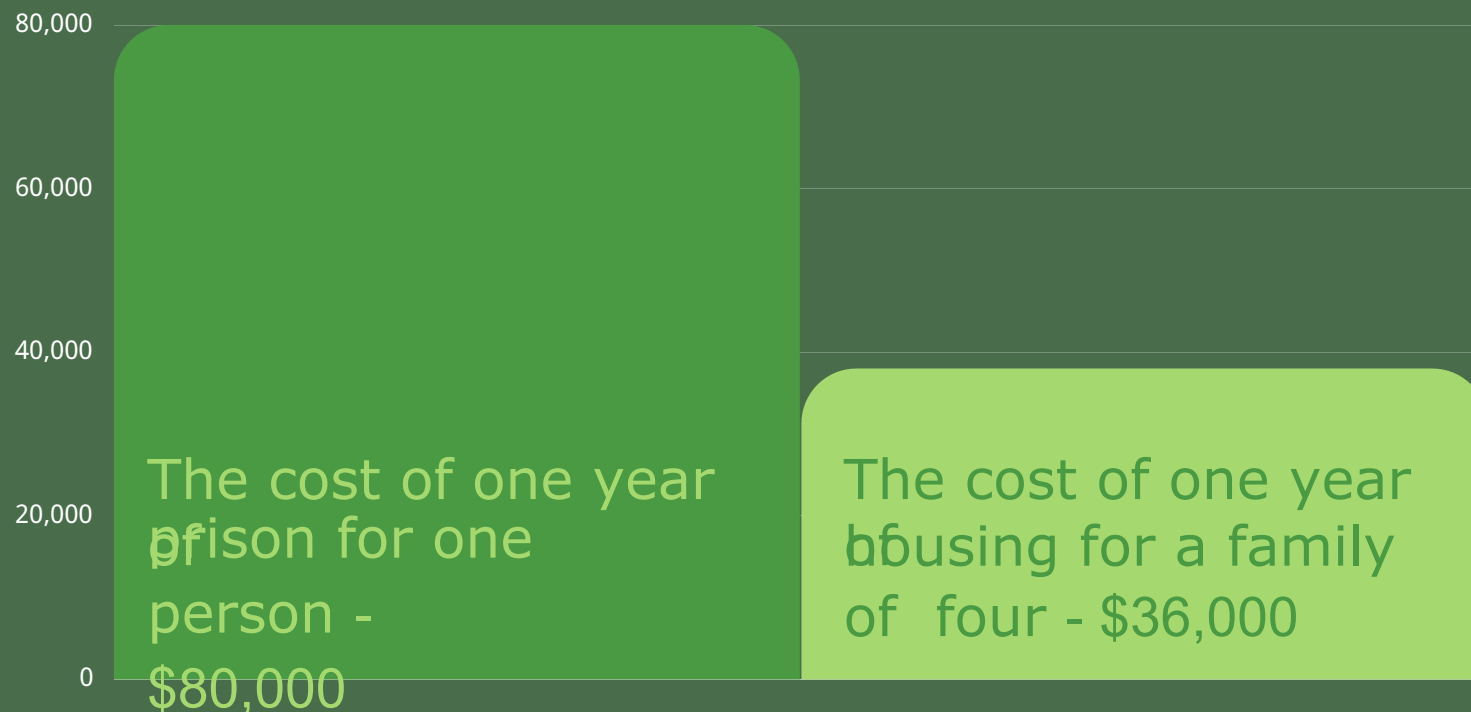
Starting Over, Inc. partners with the Claremont Colleges, CSU San Bernardino School of Social Work, and Cal Baptist University (data informed research on best practices, Human Centered Design, Research, etc.)

This information will be available to other community-based organizations addressing homelessness, reentry, family reunification, and housing.



Starting Over, Inc.
Transitional Housing, Reentry Services,
Advocacy and Civic Engagement

The housing programs and services that exist continue to pose barriers to the same people we are here to support. After being released, our community members find themselves with no housing options, preventing them from fully reintegrating into community and causing negative health outcomes - even more so as we navigate COVID-19



Let's end the cycle.

According to CDCR, incarcerated people are almost 10 times more likely to be homeless than the general public. Another 15 percent reported homelessness prior to incarceration.

Housing funding must be inclusive of people with conviction (and eviction) histories - by excluding these populations, we withhold help from the people who need it most

We may miss opportunities to truly eradicate homelessness and improve public health if we don't reconsider all barriers to housing



Starting Over, Inc.

Transitional Housing, Reentry Services,
Advocacy and Civic Engagement

Reentry is about entrances...

Reentry must include access to permanent housing and other supportive services to foster independence, self-reliance, and engagement.

Being unhoused and unsheltered drastically increases the likelihood of rearrest and incarceration, creating a cycle of poverty, crime, and suffering.

98% of people in jails and prisons are coming back home, most often back to the county they lived in prior to release.

Are we ready to support them?



Questions, Comments, or Protests?

Contact info

www.startingoverinc.org

office@startingoverinc.org

Vonya@startingoverinc.org

Toya@startingoverinc.org

6355 Riverside Ave. Riverside CA 92506

951.898.0862





HWS HOUSING AND
WORKFORCE
SOLUTIONS
ENGAGE. ENCOURAGE. EQUIP.

Marcus Dillard, Supervising Development Specialist



Housing and Workforce Solutions

MARCUS DILLARD - SUPERVISING
DEVELOPMENT SPECIALIST

SPECIAL PROGRAMS

Special Programs

HUD VASH

The VASH program is a partnership between HUD and the VA to provide Section 8 vouchers plus supportive services to homeless veterans with the goal of ending homelessness among veterans.

PROJECT ROOMKEY

Project RoomKey started in March of 2020 in response to the COVID19 pandemic. The program launched in partnership with the County Department of Behavioral Health, Adult Protective Services, the Office on Aging, Emergency Management Division, and many others.

CALWORKS Housing Support Program

The HSP program addresses the housing needs of homeless families with children who are currently receiving TANF assistance. The program is a collaboration between DPSS and HWS. HWS provides housing navigation, housing counseling and short/medium term rental subsidies.

Housing Opportunities for Persons With AIDS (HOPWA)

The goal of the HOPWA program is to assist low-income individuals and/or families that live with HIV/AIDS with supportive services and housing subsidies.

Special Programs

SHELTER PLUS CARE

Shelter Plus Care program has the capacity to provide 107 units of housing for some of the “hardest to reach” residents in Riverside County who experience homelessness and who are disabled.

MAINSTREAM 811

The Mainstream Program provides rental assistance through Section 8 Housing Choice Vouchers to very low-income, disabled households.

EMERGENCY HOUSING VOUCHERS

Emergency Housing Vouchers (EHV's) are specifically designed for households who are:

- Homeless;
- At Risk of Homelessness;
- Fleeing or attempting to flee domestic violence, dating violence, sexual assault, stalking or human trafficking;

SECURITY DEPOSIT ASSISTANCE

Providing clients with Deposit assistance,

Housing Statistics

HUD VASH –

- 412 Veterans and Families

Project Roomkey –

- 1115 Individual Assisted
- 596 – Placed into Permanent Housing
- 246 Individual Currently on Program

Calworks –

- 235 Families

HOPWA –

- 88 Program Participants

Shelter Plus Care -

- 93 Program Participants

Mainstream 811 -

- 80 Program Participants

Emergency Housing Vouchers -

- 347 Vouchers Available

5 Minute Break



Marcus Cannon, LMFT, Behavioral Health Services Administrator



Riverside University Health System – Behavioral Health

HHOPE Program

What is HHOPE?

RUHS-BH
Housing &
Homeless
Services



Homeless



Housing



Opportunities



Partnerships



Education



“Wellness Begins With a Home”

HHOPE Program



HHOPE History

RUHS-BH
has
provided
services to
people on
the streets
for over 25
years!

HHOPE Program Services

- Coordinated Entry System (CES)
“HomeConnect”
- Housing Crisis Response
- Whole Person Care
- CalAIM Enhanced Care Management (ECM) & Community Supports (CS)
- Permanent Supportive & Affordable Housing Programs
- Emergency Housing, Transitional Housing & Rental Assistance
- AB-109 Housing
- Adult Residential Facilities & Life Support Program





Coordinated Entry
System
(CES) HomeConnect

**HomeConnect is a
County-wide
coordinated response
system for people in a
housing crisis.**

Any Riverside County
resident who is
homeless, or at-risk of
losing housing, can call.

HomeConnect can help
by connecting people to
resources to avoid loss of
housing, find financial
and other resources,
locate a suitable rental,
and other services to
assist in a housing crisis.

800-498-8847

HomeConnect@RUhealth.org



Housing Crisis Response Teams

**HHOPE HCRT's are located
county-wide and provide
Housing Crisis Response &
Support through:**

Street Outreach &
Engagement

Housing Crisis Plan
Development & Support

Linkage to Services &
Resources

Housing Navigation

Outreach Requests:

800-498-8847

HomeConnect@RUhealth.org

Emergency Housing, Transitional Housing & Rental Assistance

The HHOPE Emergency Housing, Transitional Housing & Rental Assistance Team assists individuals & families in a housing crisis to obtain short-term emergency shelter, or to maintain their current tenancy through rental assistance.

Qualifications:

- Open to BH clinic
- Currently homeless with very little or no resources OR
- Pending immediate homelessness
- ELMR Patient Care Plan must include Housing Goal

To Apply

- BH Case Worker sends application to HHOPE@RUhealth.org
- EH applications must include a viable “Exit From Housing Plan”
- HHOPE will coordinate EH entry or RA funding upon approval



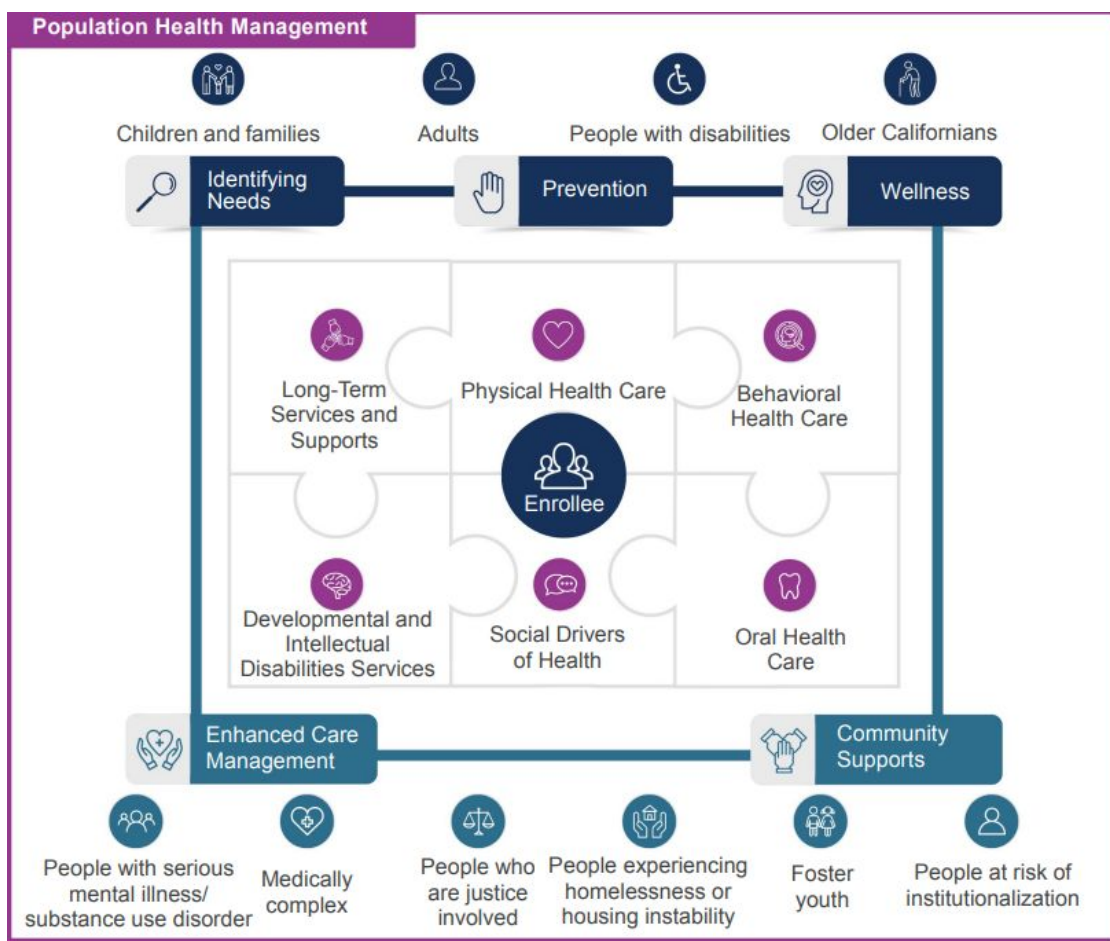
Whole Person Care (WPC)

WPC clients have chronic health concerns, justice involvement, along with active probation or parole. Referral through nursing staff stationed with Probation/Parole only.

HHOPE's WPC Team assists clients by helping them get connected to appropriate resources such as Housing, Medi-Cal, Behavioral Health, Substance Use Treatment, and Employment services, in order to assist in reaching self-sufficiency, improve and maintain health, and reduce recidivism.

888-252-1783

WPC@RUhealth.org



Enhanced Care Management (ECM) & Community Supports (CS)

CalAIM is a long-term commitment to transform and strengthen Medi-Cal, making the program more equitable, coordinated, and person-centered to help people maximize their health and life trajectory.

ECM: Enhanced Care Management is person-centered care management provided to the highest-need Medi-Cal enrollees, primarily through in-person engagement where enrollees live, seek care, and choose to access services.

CS: Medi-Cal managed care plan partners will begin offering “Community Supports,” such as housing supports and medically tailored meals, which will play a fundamental role in meeting enrollees’ needs for health and health-related services that address social drivers of health.

The Issue



Over half of Medi-Cal spending is attributable to the **5 percent of enrollees with the highest-cost needs.**



Medi-Cal enrollees typically have **several complex health conditions** involving physical, behavioral, and social needs.



Enrollees with complex needs must often engage **several delivery systems to access care**, including primary and specialty care, dental, mental health, substance use disorder, and long-term services and supports.

California introduced community-based care management with promising results in many counties through the Health Homes Program and Whole Person Care Pilots. **CalAIM is California's first statewide effort to address complex care management.**

The Issue



Medi-Cal enrollees with **complex health needs and unmet social needs** are at high risk of hospitalization, institutionalization, and other higher cost services.



People experiencing homelessness have higher rates of diabetes, hypertension, HIV, and mortality **resulting in longer hospital stays and higher readmission rates than the general public.**



About 20 percent of Californians are food insecure. California spends approximately \$7.2 billion annually on health care associated with food insecurity.



More than 65 percent of Medi-Cal enrollees are from communities of color. Addressing social drivers of health is key to advancing health equity and helping people with high health care and social needs.

A key focus of CalAIM is addressing the challenges facing people with complex and unmet needs. One of the main tools for achieving that is Community Supports.

Enhanced Care Management (ECM) & Community Supports (CS)

ECM: Mobile Teams to conduct care management staffed by:

- Registered Nurse
- Alcohol & Drug Counselor (BHS III)
- Behavioral Health Specialist II
- Peer Support Specialist
- Community Services Assistant

CS: Services to address social determinants of health needs:

- Housing Navigation
- Housing Deposits
- Housing Tenancy
- Short-Term Post-Hospitalization Housing
- Recuperative Care
- Sobering Center



AB-109 Housing

AB-109 clients have justice involvement & are on active probation. AB-109 clients are referred through Riverside County Probation only.

HHOPE's AB-109 Team provides supportive services to procure and maintain stable housing through:

Emergency housing, food & hygiene kits ; Housing location assistance; Employment resources, bus passes & work clothing; Information on available classes & resources; Support to housing providers & issue mitigation.



Permanent Supportive Housing

Permanent Supportive Housing clients are chronically homeless and disabled. PSH is funded through Federal grants. Referrals are received through Coordinated Entry System (CES) only.

HHOPE PSH Supportive Housing Teams assist residents in Supportive Housing to maintain stable housing through case management services, including regular home visits, life skills support, referral to community resources, and linkage to appropriate services.



MHSA Affordable Supportive Housing

HHOPE MHSA Affordable Supportive Housing is available to eligible BH clients receiving FSP–level services who are extremely low income, homeless, or at high risk of becoming homeless.

HHOPE MHSA Supportive Housing Teams assist residents in maintaining their housing through on-site case management.

To Apply:

BH Case Worker submits application package to HomeConnect@RUhealth.org



Augmented Adult Residential Facilities (ARF)

RUHS-BH Augmented Adult Residential Facilities provide housing, care, and services to consumers needing long-term support

Consultation is Available

Difficult Housing Situation?
Homelessness or Housing Concerns?
Need Resources?

Team members are available to assist
you.

Call HomeConnect at (800) 498-8847
Call HHOPE at (951) 715-5050





Riverside University Health System – Behavioral Health

HHOPE Program

Coordinated Entry-HomeConnect: 800-498-8847

HomeConnect@RUHealth.org

*Best access point for new client referrals

HHOPE Main Line: 951-715-5050

HHOPE@RUHealth.org

*Best access point to contact staff directly or reach administration

Partner Updates

WRAP UP

Salomeh Wagaw, MPH

Program Director- Health Equity Program

RUHS- Public Health, Epidemiology & Program Evaluation

JOIN US FOR OUR 2022

EQUITY COLLABORATIVE CONVENING

RUHS - Public Health, Health Equity Program will be hosting a two-day virtual collaborative convening for community-based, faith-based, and non-governmental organizations who serve our diverse communities.

February 2 | 9 am - 1 pm

On the 1st day, attendees will see presentations by RUHS- PH Executive Team about health equity and what it means for Public Health, how racism impacts health outcomes, and beyond COVID response.

February 3 | 9 am - 1 pm

On the 2nd day, attendees will get an opportunity to hear directly from other organizations about their successes with outreach, communication, how data is used for implementation.

RUHS- PH staff will also talk about how we can provide technical assistance to your organization!

[CLICK HERE TO REGISTER!](#)

Registration questions? ✉ dramirez@ruhealth.org

Event questions? ✉ irhjelmervik@ruhealth.org

Equity Collaborative Convening Contact:

Irene Hjelmervik, MPA

Program Coordinator II

RUHS – Public Health, Epidemiology & Program
Evaluation

IrHjelmervik@ruhealth.org

Riverside County Coalition Contact:

Mary Obideyi, MPH, CHES®

Program Coordinator II

RUHS – Public Health, Epidemiology & Program Evaluation

Mobideyi@ruhealth.org



Next meeting:

Wednesday, April 20, 2022