



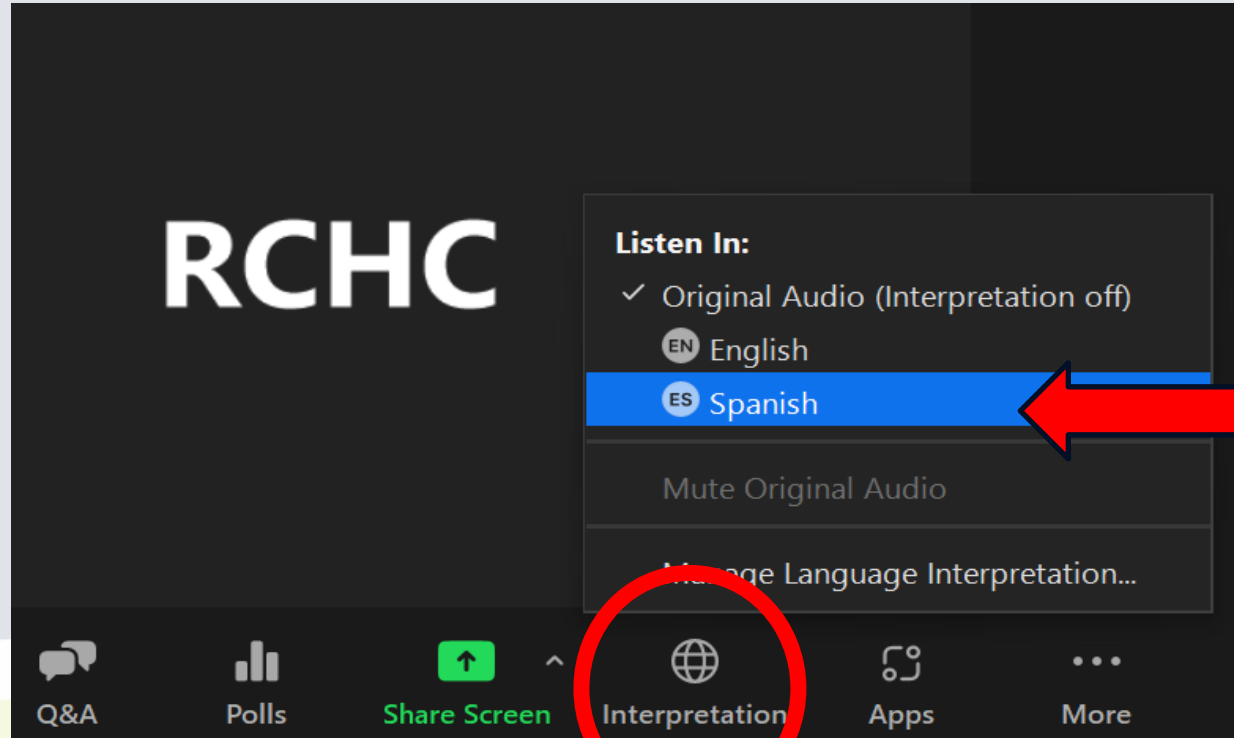
**RIVERSIDE**  
**COUNTY HEALTH**  
**COALITION**

*Community Engagement for Action:  
Breaking Down Barriers and Fostering Genuine  
Connections*

*Participación de la Comunidad para la Acción:  
Rompiendo Barreras y Fermentando Conexiones Genuinas*

**Welcome! We will begin  
momentarily.  
¡Bienvenidos! Comenzaremos en  
un momento.**

January 17<sup>th</sup>, 2024



*Para audio en español, primero haga clic en el la opción de "Interpretation." Luego hará clic en la opción de "Spanish".*



**RIVERSIDE**  
**COUNTY HEALTH**  
**COALITION**

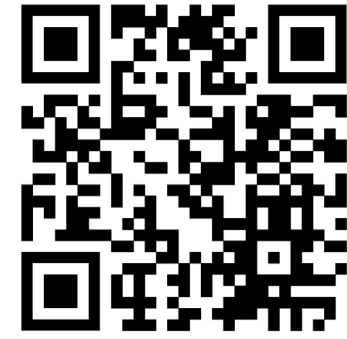
*Community Engagement for Action: Breaking Down Barriers and  
Fostering Genuine Connections*

*Participación de la Comunidad para la Acción:  
Rompiendo Barreras y Fermentando Conexiones Genuinas*

**Welcome and  
Acknowledgements!**

**¡Bienvenida y Reconocimientos!**

# AGENDA



## AGENDA

**Welcoming Remarks and Introduction**

**Remarks by Supervisor Yxstian Gutierrez**

**History of the CHA and CHIP within RCHC**

Wendy Hetherington (she/her), RUHS-Public Health, Epidemiology and Program Evaluation Chief

**Community Covid-19 Impact Hub Presentation**

Sandra Escobar (she/her), RUHS-Public Health, Epidemiologist  
Chinyelu Ugwuanyi (she/her), RUHS-Public Health, Health Education Assistant II

**Q&A**

**Break**

**Community Engagement for Action Discussion**

**Debrief**

**Survey**

**Updates/Wrap-Up**

## AGENDA

**Bienvenida e Introducciones**

**Palabras del Supervisor Yxstian Gutierrez**

**Historia del CHA y CHIP dentro de la Coalición**

Wendy Hetherington (ella), RUHS-Public Health, Epidemiology and Program Evaluation Chief

**Presentación del Centro de Impacto Comunitario de COVID-19**

Sandra Escobar (ella), RUHS-Public Health, Epidemiologist  
Chinyelu Ugwuanyi (ella), RUHS-Public Health, Health Education Assistant II

**Preguntas y Respuestas**

**Descanso**

**Discusión sobre la Participación Comunitaria para la Acción**

**Compartir la Información**

**Encuesta**

**Actualizaciones / Conclusión**

# HOUSEKEEPING / ASUNTOS



## In-Person

- Please sign in at the greeter's table
- Restrooms located in the hallway/  
Breastfeeding room available
- Staff will monitor throughout the meeting
- We have closed captioning services in English & Spanish and an ASL Interpreter.
  - Information provided as QR code below
- Slides and a recording of this event will be shared after the meeting.



## English Stream Text



## En persona:

- Regístrese en la mesa de bienvenida
- Baños ubicados en el pasillo/  
Sala de lactancia disponible
- El personal supervisará durante toda la reunión.
- Contamos con servicios de subtítulos en inglés y español y un intérprete de ASL.
  - Información proporcionada como código QR a continuación
- Las diapositivas y una grabación de este evento se compartirán después de la reunión.

## Español Stream Text



# HOUSEKEEPING / ASUNTOS



## Virtual:

- Please enter your name, pronouns, and affiliation in your profile name.
- Staff will monitor throughout the meeting
- All participants are muted upon entry.
- Please submit any questions through the Q&A box
- We have closed captioning services in English & Spanish and an ASL Interpreter.
  - Information provided in the chat



## English Stream Text



## Virtual:

- Por favor ingrese su nombre, pronombres, y afiliación en su nombre de perfil.
- El personal supervisará durante toda la reunión.
- Todos los participantes son silenciados al entrar.
- Envíe cualquier pregunta a través del cuadro de preguntas y respuestas.
- Contamos con servicios de subtítulos en inglés y español y un intérprete de ASL.
  - Información proporcionada en el chat.

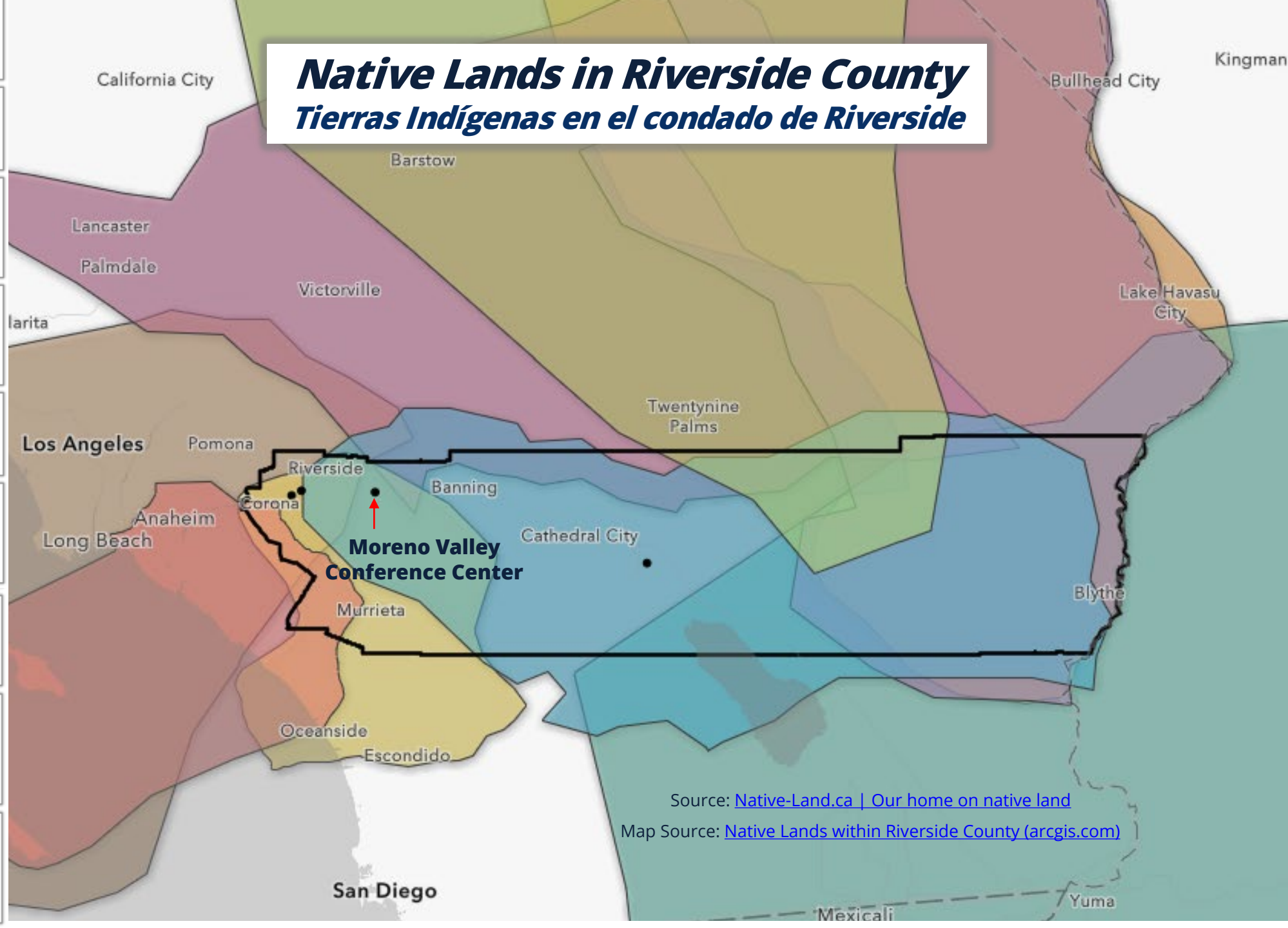
## Español Stream Text



# ***Native Lands in Riverside County***

## ***Tierras Indígenas en el condado de Riverside***

- Acjachemen (Juaneño)
- Cahuilla
- Neuwe (Western Shoshone)
- Nuwuvi (Southern Paiute)
- Nūwūwū (Chemehuevi)
- Payómkawichum (Luiseño)
- Tongva (Gabrieleno)
- Xawill kwñchawaay (Cocopah)
- Yuhaviatam/Maarenga'y am (Serrano)



Source: [Native-Land.ca](http://Native-Land.ca) | Our home on native land

Map Source: [Native Lands within Riverside County \(arcgis.com\)](http://Native Lands within Riverside County (arcgis.com))



# Remarks by Supervisor Yxstian Gutierrez

*PALABRAS DEL SUPERVISOR*



*(he/him)*



# RIVERSIDE COUNTY HEALTH COALITION

Mission:

*to Promote, Improve, and Sustain*

social and physical environments for health and wellness in Riverside County!

¡Una coalición hecha para

***Promover, Mejorar y Mantener***

entornos sociales y físicos para la salud y el bienestar en el condado de Riverside!



# Why are we here?

## *¿Por qué estamos aquí?*



- Expansion of partnerships
- Shared resources
- Highlighting innovative practices
- Community empowerment



- Expansión de asociaciones
- Recursos compartidos
- Destacando prácticas innovadoras
- Empoderamiento de la comunidad



# RIVERSIDE COUNTY HEALTH COALITION

Please pass this invitation along to your partner networks as we welcome their participation!

Community resources and events shared by the coalition can be found on our [LINKTREE](#)

## 2024 General Membership Meeting Schedule:

**TIME:**  
10 a.m. - 12 p.m.

**LOCATION:** Hybrid  
In Person or Online

[REGISTRATION INFORMATION](#)

Wednesday January 17, 2024  
Wednesday April 17, 2024  
Wednesday July 17, 2024  
Wednesday October 16, 2024

### The Riverside County Health Coalition Mission

The Riverside County Health Coalition is a public and private partnership whose mission is to promote, improve, and sustain social and physical environments for health and wellness through policy development and advocacy, environmental change, and community empowerment in Riverside County.

To fulfill its mission, the Riverside County Health Coalition meets quarterly every year to provide an excellent forum to share knowledge and experience; collaborate and network with other agency partners, schools, and organizations. The coalition aims to gather, support, and mobilize partners from multiple domains; provide leadership and vision; and coordinate county-wide efforts in the promotion of healthier living throughout our County.

@equityinrivco  
**FOLLOW US ON SOCIALS**



#### Questions?

Email the Health Equity Team

✉ [RivCoHealthEquity@ruhealth.org](mailto:RivCoHealthEquity@ruhealth.org)

# RIVERSIDE COUNTY HEALTH COALITION

¡Por favor, pase esta invitación a sus redes de socios para invitarlos a participar!

Recursos y eventos comunitarios compartidos por la coalición:  
[LINKTREE](#)

## Calendario de juntas de membresía general del 2024:

**HORARIO:**  
10 a.m. - 12 p.m.

**UBICACIÓN:** híbridas  
En persona o en línea

[INFORMACIÓN DE REGISTRO](#)

Miércoles 17 de enero, 2024  
Miércoles 17 de abril, 2024  
Miércoles 17 de julio, 2024  
Miércoles 16 de octubre, 2024

### La misión de la coalición de salud del condado de Riverside

La Coalición de Salud del Condado de Riverside es una asociación pública y privada cuya misión es promover, mejorar y mantener entornos sociales y físicos para la salud y el bienestar a través del desarrollo y la defensa de políticas, el cambio ambiental y el empoderamiento de la comunidad en el Condado de Riverside.

Para cumplir con su misión, la Coalición de Salud del Condado de Riverside se reúne trimestralmente cada año para proporcionar un excelente foro para compartir conocimientos y experiencias; colaborar y establecer contactos con otros socios de agencias, escuelas y organizaciones. La coalición tiene como objetivo reunir, apoyar y movilizar socios de múltiples dominios; proporcionar liderazgo y visión; y coordinar los esfuerzos de todo el condado en la promoción de una vida más saludable en todo nuestro Condado.

@equityinrivco  
**SÍGUENOS EN LOS REDES SOCIALES**



#### ¿Preguntas?

Envíe un correo electrónico al  
Equipo de Equidad en Salud

✉ [RivCoHealthEquity@ruhealth.org](mailto:RivCoHealthEquity@ruhealth.org)

# INTRODUCTORY POLL ICEBREAKER

*ENCUESTA INTRODUCTORIA*



# What sector does your organization represent?

## *¿Qué sector representa su organización?*

- Community Members/ Students
- Community-Based Organizations / Faith-Based Organizations
- Education / Academia
- Government
- Healthcare / Public Health
- Housing/ Planning
- Law Enforcement / First Responder
- Native / Tribal Community
- Social Services / Mental Health
- Other
- Miembros de la comunidad/Estudiantes
- Organizaciones basadas en la comunidad / Organizaciones basadas en la fe
- Educación / Academia
- Gobierno
- Cuidado de Salud / Salud Pública
- Vivienda/ Planificación
- Aplicación de la ley/ Primeros Auxilios
- Comunidad Nativa / Tribal
- Servicios Sociales / Salud Mental
- Otro

# Who is here? ¿Quién está aquí?





30 YEARS OF BUILDING FOR GOOD



WORLD BE WELL, INC.





EST. JUNE 19, 1883



Building Bridges for Special Needs-CV



# History of the CHA and CHIP within RCHC

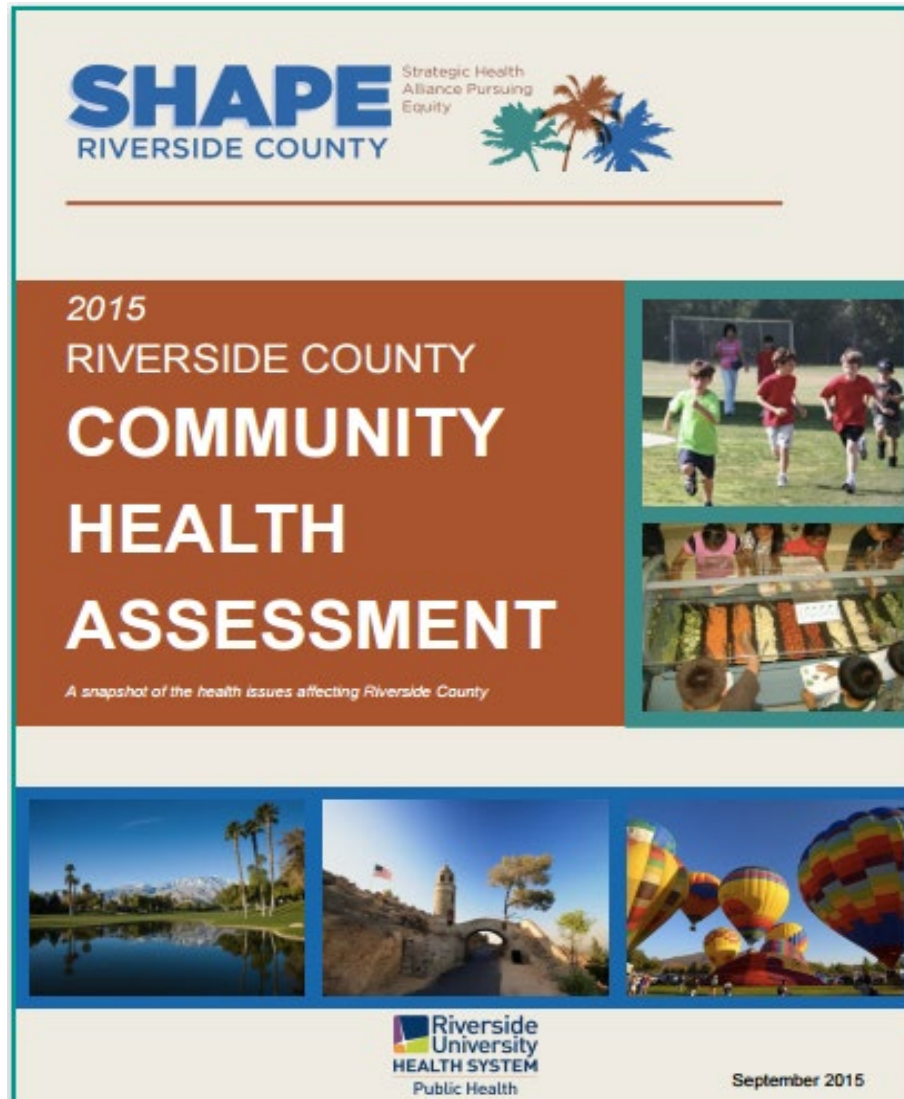
## *PRESENTACIÓN*



***Wendy Hetherington (she/her)***  
***Chief Epidemiologist***  
***RUHS – Public Health***



# History of the CHA and CHIP within RCHC



- *How it all got started...*
  - In 2014, RUHS-Public Health teamed up with other agencies to begin planning Riverside County's Community Health Assessment (CHA).
  - The purpose of the CHA is to determine public health needs and priorities .
  - In 2016, the RCHC reviewed the CHA and created the Community Health Improvement Plan (CHIP)
  - The purpose of the CHIP is to describe how partners and community will work together to create a healthier and more equitable RivCo.

# Community COVID-19 Impact Hub Presentation

*PRESENTACIÓN*

# Speakers



***Sandra Escobar (she/her)***  
***Epidemiologist***  
***RUHS – Public Health***



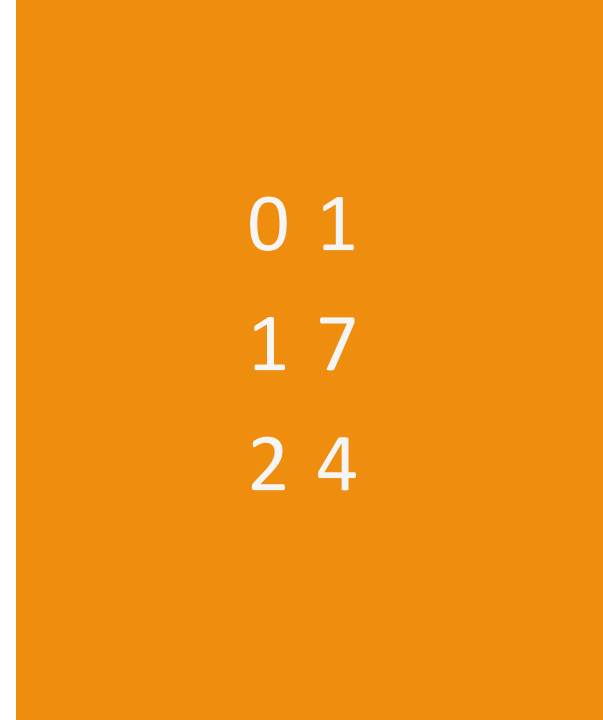
***Chinyelu Ugwuanyi (she/her)***  
***Health Education Assistant II***  
***RUHS – Public Health***



# Community COVID-19 Impact Hub (Hub)

Presentation by  
Riverside County Public Health

[https://www.ruhealth.org/  
he-community-covid19-impact-hub](https://www.ruhealth.org/he-community-covid19-impact-hub)







## Background

- The COVID-19 pandemic worsened existing health disparities and inequities in communities.
- Riverside County Department of Public Health, working with community members, established the Community COVID-19 Impact Hub.
- The Hub shares health and social data, using real stories to help understand and address the ongoing impact of COVID-19 on people's lives.

### **Our Mantra:**

**A Community COVID-19 Impact Hub  
created by the community for the community.**

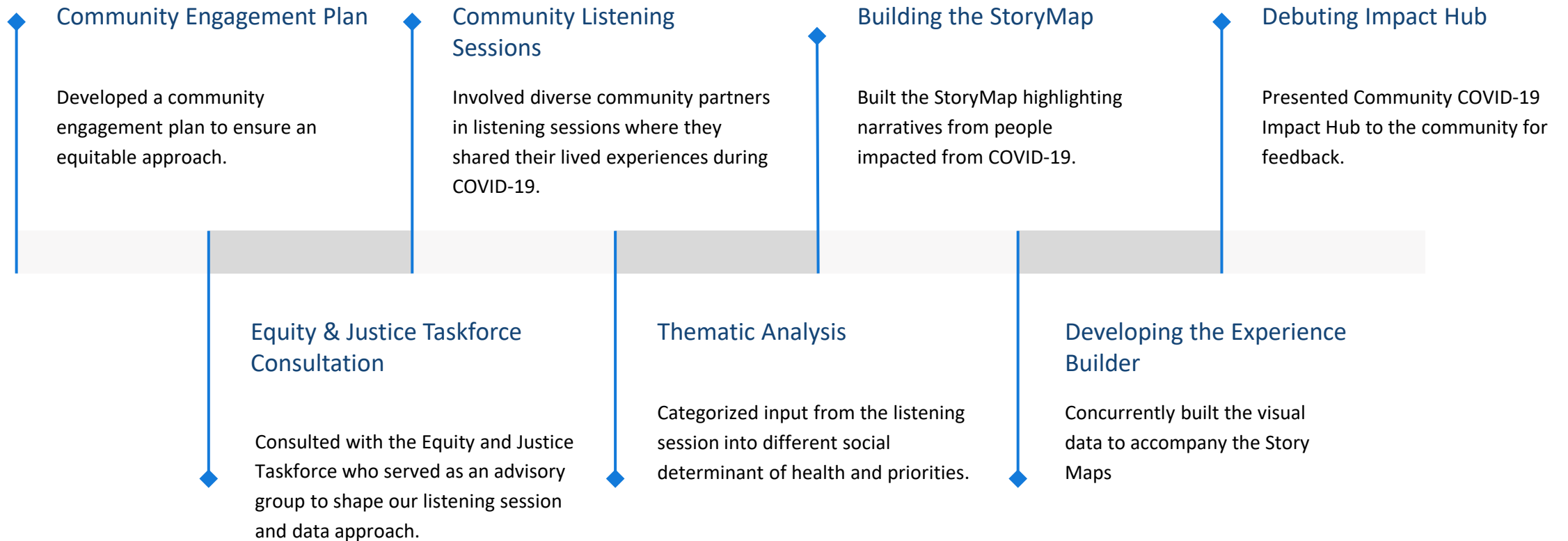
# Our Process

- The Hub application (app) was created by engaging the community to contextualize the data with lived experience stories.
- Listening sessions were held, focusing on trauma-informed discussions, and community priority areas were identified through thematic analysis.
- The Hub app was developed on ESRI ArcGIS Experience Builder, and the thematic analysis findings guided the data indicators displayed on the Hub app.
- The Hub visualizes population data and highlights community stories through Story Maps.

The Hub is a community-driven platform presenting data and community stories in an accessible way.



# Engaging the Community





# Listening Sessions At-a-Glance

## Outreach:

45 community-based organizations

Completed: 17

## Population Outreach and Collaboration

- Racial and Ethnic groups
- Geographic representation
- Ability Status
- Sexual and Gender Minorities
- Language
- Spirituality/Faith
- Youth
- Young Adults
- Elderly
- Immigrants

\*Note: Intersectionality of Populations  
i.e., Farm Workers



# Listening Session

## Approach

Posed prompts inquiring about the impact of the COVID-19 pandemic on our communities.

Provided inclusive accommodations for participants.



1. How did the global pandemic impact you and/or your community?

2. What challenges has your community faced as a result of the COVID-19 pandemic?

3. What are the things that helped people in your community do well despite challenges?

4. What types of resources do you think would be most beneficial for you or members of your community to help address some of the problems with issue area(s)?

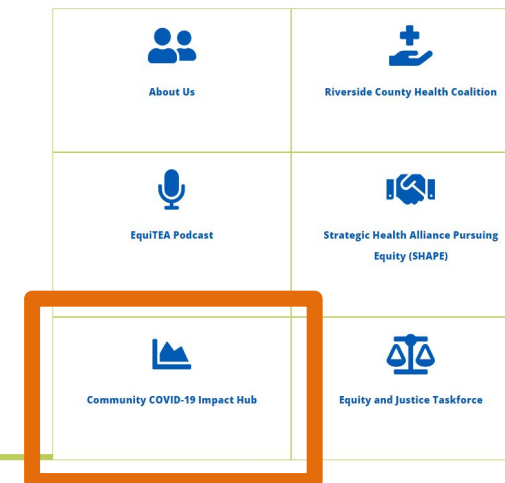
# Creating the Story Map

## Thematic Analysis

Identified themes and topics from listening sessions.

## Story Map Composition

Highlighted narratives and common sentiments heard throughout the listening sessions and used visual and media elements to bring stories to life.



### Health Equity Program

Housed under the Epidemiology and Program Evaluation Branch, the Riverside County Health Equity Program addresses the social determinants of health, disparities and health inequities by expanding the health department capacity to serve under-resourced and traditionally under-served communities across Riverside County. The program focuses on building and strengthening partnerships with various local organizations to bring relevant and accessible services to residents, with an emphasis on racial and ethnic minority groups, communities with unique needs and people living in rural communities.

**Questions? Contact us here: [RivCoHealthEquity@ruhealth.org](mailto:RivCoHealthEquity@ruhealth.org)**

[Add Me to Your Mailing List](#)

Riverside County DEIA

COVID-19 AT-RISK POPULATION



# Community Organizations Shared Priority Areas

Topic	Mention Count
Resources (wish list or existing)	185
Mental Health/Behavioral Health	176
Challenges during COVID-19	152
Technology/Social Media/communication (Health Education)	132
Social Support	102
Underserved/Under Resourced Groups (Disparities/Inequities)	90
Resiliency Factors during COVID-19	73
Healthcare Systems/ Access/inadequate health care	68
Childcare/Child Development/Child Health/Parenting (Youth)	58
Partnerships/Collaborations (Suggestions or Existing)	45
Education	42
Housing	36

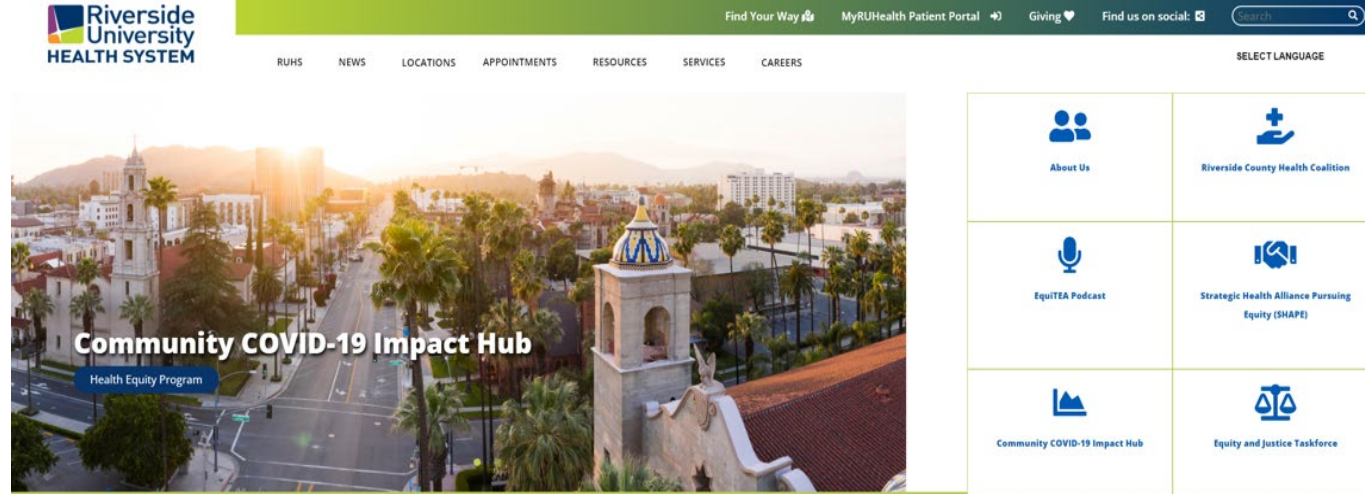
Topic	Mention Count
Fear and Mistrust (CV-19/Healthcare System)	34
Stereotypes/Misconceptions	32
Economy	31
Employment/Workforce	29
Community (What Does Community Mean)/Culture	27
Political Environment (Advocacy, Political, Politics)	23
Health (general)	21
Immigration/Global Issues	19
Faith/Spirituality	12
Infrastructure/Built environment	12
Hate crimes	11
Cultural Competency	10

Topic	Mention Count
Racism	9
Excluded	6
Language/Translations	6
Poverty	5
Health Insurance	4
Air Quality	3
Climate Change	3
Environmental Pollution	3
Other	3
Obesity	2
Property Crime	2

# Building the Data Visual Experience

The Hub was created using a tool called ESRI ArcGIS Experience Builder. This tool helps build a user-friendly platform where you can see data, maps, and stories about the community.

Data visualization tools for the most common topics identified during the listening sessions will be displayed on the hub along with stories and narratives highlighting the lived experiences from community members for those topics.



## Community COVID-19 Impact Hub

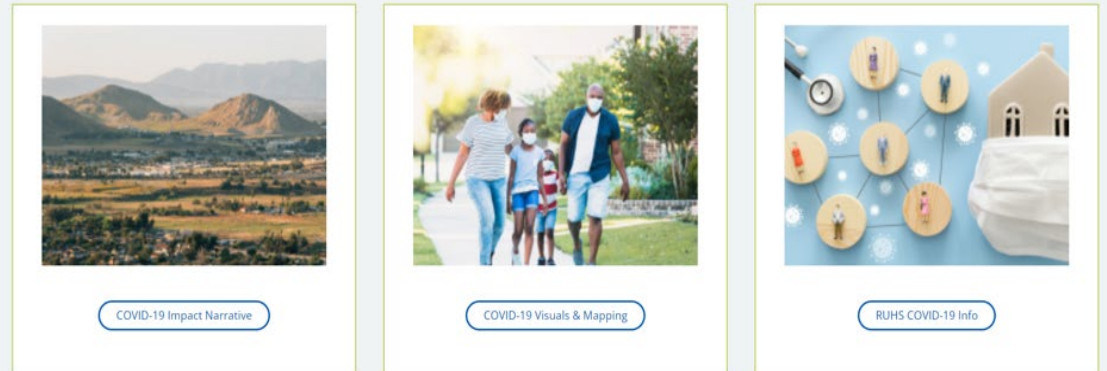
### How does a global pandemic impact our communities?

The COVID-19 pandemic exacerbated existing health inequities and its impact continues to be felt among communities today. The Riverside County Department of Public Health (RUHS-Public Health) worked alongside community members to build a Community COVID-19 Impact Hub (Hub). The Hub displays health and social data and provides context to data via stories and narratives collected during listening sessions from community partners and programs serving primarily underrepresented demographics.

This collaborative effort aims to foster genuine connections and build a resilient community where everyone can thrive. The Health Equity Program firmly believes that **EVERYONE'S VOICE MATTERS** and will persist in elevating real experiences until every voice is heard. Through these combined efforts, we strive to lay the foundation for enduring health and prosperity for all in Riverside County.

Contact us Here: [RivCoHealthEquity@ruhealth.org](mailto:RivCoHealthEquity@ruhealth.org)

For More Information: [Add Me to Your Mailing List](#)



# Community Covid-19 Impact Hub Preview

The screenshot shows the website header with the Riverside University Health System logo, navigation links (RUHS, NEWS, LOCATIONS, APPOINTMENTS, RESOURCES, SERVICES, CAREERS), and utility links (Find Your Way, MyRUHealth Patient Portal, Giving, Find us on social). A search bar is also present. The main content area features a large image of a desert landscape with the text "Community COVID-19 Impact Hub" and "Health Equity Program". To the right, there is a grid of six icons representing different resources: About Us, Riverside County Health Coalition, EquiTEA Podcast, Strategic Health Alliance Pursuing Equity (SHAPE), Community COVID-19 Impact Hub, and Equity and Justice Taskforce.

## Community COVID-19 Impact Hub

### How does a global pandemic impact our communities?

The COVID-19 pandemic exacerbated existing health inequities and its impact continues to be felt among communities today. The Riverside County Department of Public Health (RUHS-Public Health) worked alongside community members to build a Community COVID-19 Impact Hub (Hub). The Hub displays health and social data and provides context to data via stories and narratives collected during listening sessions from community partners and programs serving primarily underrepresented demographics.

This collaborative effort aims to foster genuine connections and build a resilient community where everyone can thrive. The Health Equity Program firmly believes that **EVERYONE'S VOICE MATTERS** and will persist in elevating real experiences until every voice is heard. Through these combined efforts, we strive to lay the foundation for enduring health and prosperity for all in Riverside County.

**Contact us Here:** [RivCoHealthEquity@ruhealth.org](mailto:RivCoHealthEquity@ruhealth.org)

**For More Information:** [Add Me to Your Mailing List](#)







# Next Steps

- Develop additional Story Maps and data topics focused on mental health, poverty, housing, etc.
- Continue engagement to gather input from community members on the data and visuals.
- Enhance the user interface for the Hub; improve accessibility features.
- Promote the hub, monitor usage and impact.
- Establish a feedback loop for continuous improvement.



# Acknowledgements

- Equity & Justice Taskforce
- Riverside University Health System – Behavioral Health, Cultural Competency Liaisons
- Community-led Organizations
- Community Members



**Together, building a healthier, more equitable, and just  
Riverside County communities.**



# Q & A

*PREGUNTAS Y RESPUESTAS*

# 10 Minute Break

*DESCANSO DE 10 MINUTOS*

# Community Engagement for Action Discussion

*DIÁLOGO*



# In-person & Virtual Break-Out Groups



## How to use Jamboard

**Note: Please do not click "Clear Frame" on top of the screen. Doing so, will delete the contents of the whole slide :(**

Click the "Sticky Note" button to write your comments and/or questions. When finished writing, click save to have your note displayed on the jamboard frame.

\*When your sticky note displays on the jamboard frame, please make sure to move it to an area that is not blocking another participant's sticky note.

Sticky note  
Hi, I'm Bob! :)

Hi, I'm Stephanie! :)

Hi, I'm Bob! :)

Hi, I'm Stephanie! :)

# Debrief

*COMPARTIR LA INFORMACIÓN*

# Survey

*Encuesta*



# NEW RCHC LOGO!

The coalition will be rebranding the logo this year, and we would like your input.

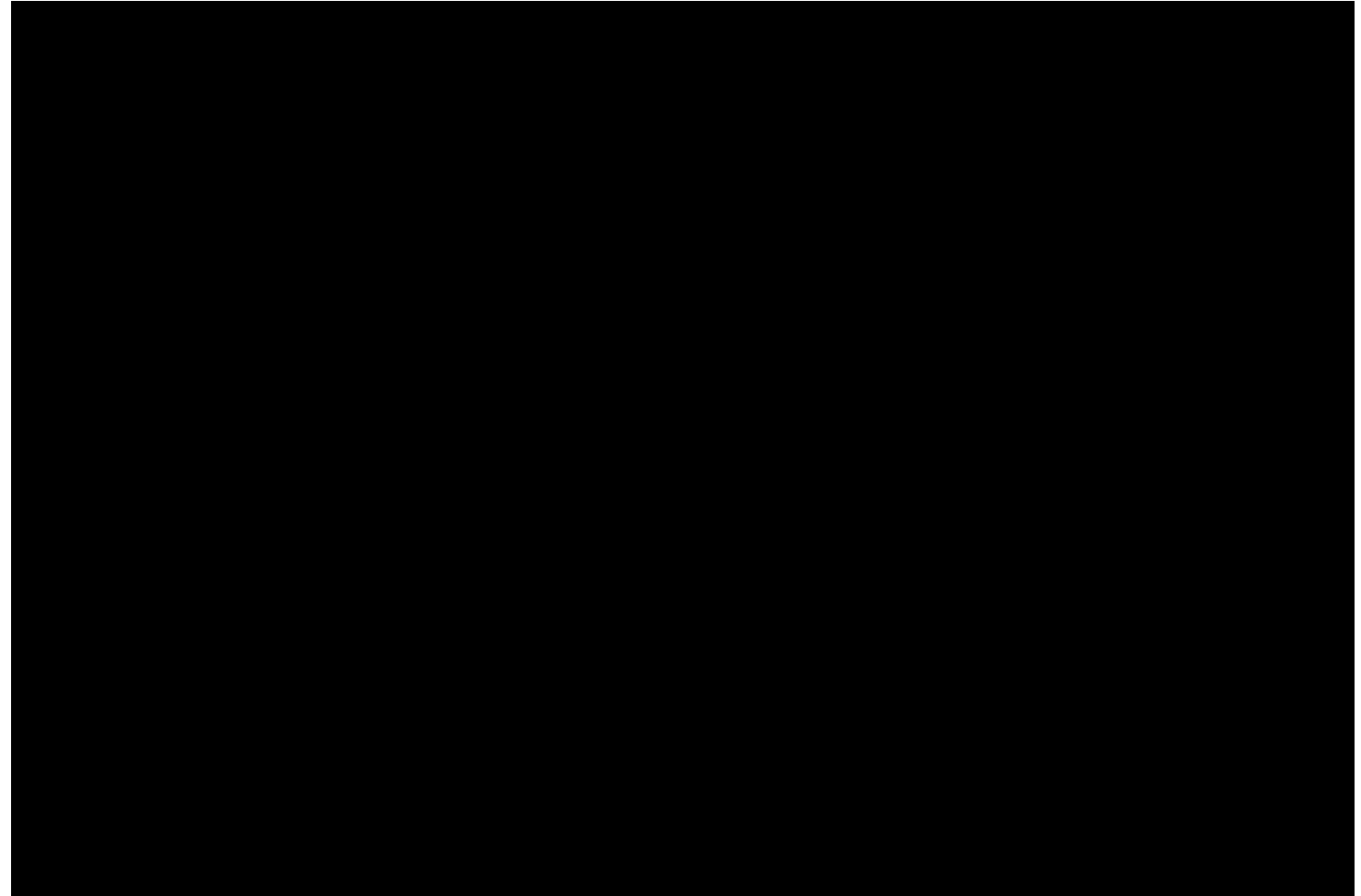
- KEY CONCEPTS TO CONVEY: equity, community, diversity, collaboration, “my voice matters”
- TONE/VIBE: community first/led, approachable, inviting



# Podcast Episode Topics



- The Health Equity Program wants your input on topics for the Equitea podcast.
  - Podcast rating
  - What topic(s) would make you interested in listening to the podcast?
  - What type of organizations do you think should be featured on the podcast?



# EQUITEA

RIVCO PUBLIC HEALTH PODCAST



@EquityInRivco





# Kindly take our survey

*Por favor responda a nuestra encuesta*

Your feedback will help us advance health equity in  
Riverside County, together!

¡Sus comentarios nos ayudarán a promover la equidad en salud en el condado de  
Riverside, juntos!

**English & Español**



The survey link is also in the chat.

*El enlace de la encuesta también está en el chat.*

# Updates

*ACTUALIZACIONES*

[RivCoHealthEquity@ruhealth.org](mailto:RivCoHealthEquity@ruhealth.org)

Coming soon!

# GRANT OPPORTUNITIES

for Riverside County nonprofits  
conducting COVID-19 efforts:

- COVID-19 Testing
- COVID-19 Related Coordination and Education Activities
- COVID-19 Prevention and Mitigation Education
- COVID-19 Related Community Member Connections
- Community Member Incentives (to encourage participation and completion in COVID-19 outreach and education efforts)

On behalf of Riverside University Health System - Public Health (RUHS-PH), Inland SoCal United Way is pleased to announce a competitive process to distribute COVID-19 Health Disparities Grant Funding. A Request for Applications for Round 1 funding will be released in early February. Additional rounds of funding will be made available after the initial round.

For questions or to be added the interest list, please email:

[GrantApplicants@iscuw.org](mailto:GrantApplicants@iscuw.org)



For more information,  
please email:  
[GrantApplicants@iscuw.org](mailto:GrantApplicants@iscuw.org)





# Follow Us on Social Media

*Síguenos en las redes sociales*

@equityinrivco



Instagram



Tik Tok

Links in Chat

*Enlaces en el Chat*



# RCHC LinkTree



## RivCo Health Coalition

Equity in RivCo Resources, Events, and Coalition Registration Link



### RCHC Meeting Registration



Riverside County Health Coalition - July 19, 2023 (Hybrid Options)

### Community Resources and Events

Partner Resources

Partner Events

### Funding Opportunities

HCAI- Caring4Cal- Workforce Fund

CDPH- Injury & Violence Prevention Branch Program- Strengthening Economic Security and Mobility



Yield Giving Open Call for Community Based Organizations

### Riverside University Health System



4.27.23, Promote Self-Efficacy & Community Efficacy Training

## Social Media Links

*Enlaces de Redes Sociales*



# Share Your Thoughts

*Comparta Sus Ideas*

Kindly take our survey. Your feedback will help us advance health equity in Riverside County, together!

Por favor responda a nuestra encuesta ¡Sus comentarios nos ayudarán a promover la equidad en salud en el condado de Riverside, juntos!

**English & Español**



The survey link is also in the chat.

*El enlace de la encuesta también está en el chat.*





**RIVERSIDE**  
**COUNTY HEALTH**  
**COALITION**

## **Riverside County, Health Equity Program**

**RUHS – Public Health, Epidemiology & Program Evaluation**

**Programa de Equidad en Salud  
Epidemiología y Evaluación de Programas**

[RivCoHealthEquity@ruhealth.org](mailto:RivCoHealthEquity@ruhealth.org)

---

THANK YOU

GRACIAS

---

Next meeting:

Wednesday, April 17<sup>th</sup>, 2024

The meeting will take place virtually and in person.

Próxima reunión:

miércoles, 17 de abril de 2024

La reunión se llevará a cabo de manera virtual y presencial.